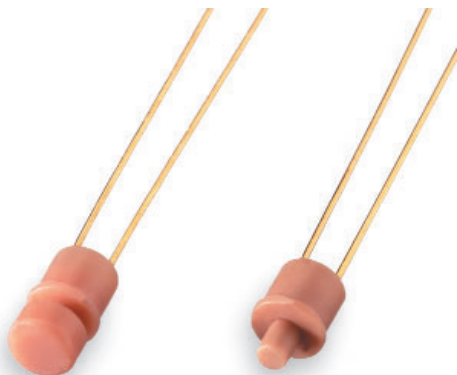


model **2900**

ULTRA MINIATURE PUSH BUTTON

technical datasheet



> features <

- Very small – 1.9 mm in diameter
- Overtravel design: switch makes contact before driver is fully depressed
- Designed for mechanically actuated applications
- Gold-plated flexible leads
- SPST normally open

> specifications <

Mechanical Data

Switch Operation Force >30 cN <90 cN
Pull Strength of Terminals >500 cN
Bending of Terminals >2 cycles 90°; min. 0.5 mm
(0.02 in.) from base/housing
Life Cycle Expectancy 100,000 cycles

Electrical Data

Switch Contact Resistance <150 mΩ
Insulation Resistance >1 MΩ
Max. Continuous Current 500 mA

Environmental Data

Solderability 260°C/(500°F) for 3 sec. or
315°C/(600°F) for 1 sec.
Storage Temperature -40°C to 60°C
Operating Temperature -10°C to 55°C

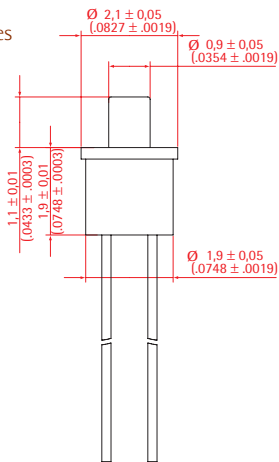
Construction

Contact Material Gold-plated copper alloy
Housing Polyamide
Terminal Silver, gold-plated
Springs Stainless steel

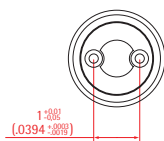
Specifications subject to change.

dimensions

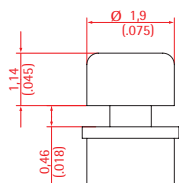
Dimensions shown in millimeters (inches in parentheses).



SIDE VIEW
(SHOWN WITH STANDARD DRIVER)



BOTTOM VIEW



MUSHROOM CAP

II driver style

- [1] STANDARD
- [2] WITH MUSHROOM CAP
- [X] SPECIAL

> ordering <

How to order— Using the chart below, determine your order number by finding the correct sequence of code numbers and/or letters as shown at right. Details on each parameter can be found within the brochure in the section with the corresponding roman numeral.

	model	body style	driver style	color	special
	I	II	III	IV	
2900	X	X	XX	XX	

PARAMETER	YOUR CHOICE	GUIDELINES/NOTES
I body style		[F] Flanged [U] Flangeless
II driver style		
III color		Standard colors available: 00, 03, 10, 13, 14, 16, 18, 20, 21, 22, 23, 24, 25, 36. Additional colors available, see Color Chip Chart in Appendix.
IV special		[S] Standard [XX] Special