



**MCP4728**  
**Evaluation Board**  
**User's Guide**

---

**Note the following details of the code protection feature on Microchip devices:**

- Microchip products meet the specification contained in their particular Microchip Data Sheet.
- Microchip believes that its family of products is one of the most secure families of its kind on the market today, when used in the intended manner and under normal conditions.
- There are dishonest and possibly illegal methods used to breach the code protection feature. All of these methods, to our knowledge, require using the Microchip products in a manner outside the operating specifications contained in Microchip's Data Sheets. Most likely, the person doing so is engaged in theft of intellectual property.
- Microchip is willing to work with the customer who is concerned about the integrity of their code.
- Neither Microchip nor any other semiconductor manufacturer can guarantee the security of their code. Code protection does not mean that we are guaranteeing the product as "unbreakable."

Code protection is constantly evolving. We at Microchip are committed to continuously improving the code protection features of our products. Attempts to break Microchip's code protection feature may be a violation of the Digital Millennium Copyright Act. If such acts allow unauthorized access to your software or other copyrighted work, you may have a right to sue for relief under that Act.

---

Information contained in this publication regarding device applications and the like is provided only for your convenience and may be superseded by updates. It is your responsibility to ensure that your application meets with your specifications. MICROCHIP MAKES NO REPRESENTATIONS OR WARRANTIES OF ANY KIND WHETHER EXPRESS OR IMPLIED, WRITTEN OR ORAL, STATUTORY OR OTHERWISE, RELATED TO THE INFORMATION, INCLUDING BUT NOT LIMITED TO ITS CONDITION, QUALITY, PERFORMANCE, MERCHANTABILITY OR FITNESS FOR PURPOSE. Microchip disclaims all liability arising from this information and its use. Use of Microchip devices in life support and/or safety applications is entirely at the buyer's risk, and the buyer agrees to defend, indemnify and hold harmless Microchip from any and all damages, claims, suits, or expenses resulting from such use. No licenses are conveyed, implicitly or otherwise, under any Microchip intellectual property rights.

**Trademarks**

The Microchip name and logo, the Microchip logo, dsPIC, KEELOQ, KEELOQ logo, MPLAB, PIC, PICmicro, PICSTART, rfPIC and UNI/O are registered trademarks of Microchip Technology Incorporated in the U.S.A. and other countries.

FilterLab, Hampshire, HI-TECH C, Linear Active Thermistor, MXDEV, MXLAB, SEEVAL and The Embedded Control Solutions Company are registered trademarks of Microchip Technology Incorporated in the U.S.A.

Analog-for-the-Digital Age, Application Maestro, CodeGuard, dsPICDEM, dsPICDEM.net, dsPICworks, dsSPEAK, ECAN, ECONOMONITOR, FanSense, HI-TIDE, In-Circuit Serial Programming, ICSP, ICEPIC, Mindi, MiWi, MPASM, MPLAB Certified logo, MPLIB, MPLINK, mTouch, nanoWatt XLP, Omniscient Code Generation, PICC, PICC-18, PICKit, PICDEM, PICDEM.net, PICTail, PIC<sup>32</sup> logo, REAL ICE, rfLAB, Select Mode, Total Endurance, TSHARC, WiperLock and ZENA are trademarks of Microchip Technology Incorporated in the U.S.A. and other countries.

SQTP is a service mark of Microchip Technology Incorporated in the U.S.A.

All other trademarks mentioned herein are property of their respective companies.

© 2009, Microchip Technology Incorporated, Printed in the U.S.A., All Rights Reserved.

 Printed on recycled paper.

**QUALITY MANAGEMENT SYSTEM**  
**CERTIFIED BY DNV**  
**== ISO/TS 16949:2002 ==**

*Microchip received ISO/TS-16949:2002 certification for its worldwide headquarters, design and wafer fabrication facilities in Chandler and Tempe, Arizona; Gresham, Oregon and design centers in California and India. The Company's quality system processes and procedures are for its PIC<sup>®</sup> MCUs and dsPIC<sup>®</sup> DSCs, KEELOQ<sup>®</sup> code hopping devices, Serial EEPROMs, microperipherals, nonvolatile memory and analog products. In addition, Microchip's quality system for the design and manufacture of development systems is ISO 9001:2000 certified.*



# MCP4728 EVALUATION BOARD USER'S GUIDE

---

---

## Table of Contents

---

---

<b>Preface</b> .....	<b>1</b>
Introduction.....	1
Document Layout .....	1
Conventions Used in this Guide .....	2
Recommended Reading.....	2
The Microchip Web Site .....	3
Customer Support .....	3
Document Revision History .....	3
<b>Chapter 1. Quick Start Instructions</b>	
1.1 Introduction .....	5
1.2 Description of the MCP4728 Evaluation Board .....	5
1.3 Getting Started with PICKit Serial Analyzer .....	7
<b>Appendix A. Schematic and Layouts</b>	
A.1 Introduction .....	35
A.2 Board – Schematic .....	36
A.3 Board – Top Silk, Top Pads and Top Copper .....	37
A.4 Board – Top Copper and Pads .....	38
A.5 Board – Top Pads and Silk .....	39
A.6 Board – Bottom Copper Layer .....	40
<b>Appendix B. Bill Of Materials (BOM)</b>	
<b>Appendix C. MCP4728 Read/Write Commands</b>	
C.1 Introduction .....	43
<b>Worldwide Sales and Service</b> .....	<b>46</b>

# MCP4728 Evaluation Board User's Guide

---

NOTES:

---

---

## Preface

---

---

### NOTICE TO CUSTOMERS

All documentation becomes dated, and this manual is no exception. Microchip tools and documentation are constantly evolving to meet customer needs, so some actual dialogs and/or tool descriptions may differ from those in this document. Please refer to our web site ([www.microchip.com](http://www.microchip.com)) to obtain the latest documentation available.

Documents are identified with a “DS” number. This number is located on the bottom of each page, in front of the page number. The numbering convention for the DS number is “DSXXXXA”, where “XXXX” is the document number and “A” is the revision level of the document.

For the most up-to-date information on development tools, see the MPLAB® IDE on-line help. Select the Help menu, and then Topics to open a list of available on-line help files.

## INTRODUCTION

This chapter contains general information that will be useful to know before using the MCP4728 Evaluation Board. Items discussed in this chapter include:

- Document Layout
- Conventions Used in this Guide
- Recommended Reading
- The Microchip Web Site
- Customer Support

## DOCUMENT LAYOUT

This document describes how to use the MCP4728 Evaluation Board with PICKit™ Serial Analyzer. The manual layout is as follows:

- **Chapter 1. “Quick Start Instructions”** – this chapter provides an overview of the MCP4728 Evaluation Board and instructions on how to use the MCP4728 Evaluation Board with the PICKit™ Serial Analyzer.
- **Appendix A. “Schematic and Layouts”** – shows the schematic and layout diagrams for the MCP4728 Evaluation Board.
- **Appendix B. “Bill Of Materials (BOM)”** – lists the parts used to build the MCP4728 Evaluation Board.
- **Appendix C. “MCP4728 Read/Write Commands”** – shows the read/write commands for the MCP4728 Evaluation Board.

# MCP4728 Evaluation Board User's Guide

## CONVENTIONS USED IN THIS GUIDE

This manual uses the following documentation conventions:

### DOCUMENTATION CONVENTIONS

Description	Represents	Examples
<b>Code (Courier font):</b>		
Plain characters	Sample code Filenames and paths	#define START c:\autoexec.bat
Angle brackets: < >	Variables	<label>, <exp>
Square brackets [ ]	Optional arguments	MPASMWIN [main.asm]
Curly brackets and pipe character: {   }	Choice of mutually exclusive arguments; An OR selection	errorlevel {0 1}
Lowercase characters in quotes	Type of data	"filename"
Ellipses...	Used to imply (but not show) additional text that is not relevant to the example	list ["list_option...", "list_option"]
0xnnn	A hexadecimal number where n is a hexadecimal digit	0xFFFF, 0x007A
Italic characters	A variable argument; it can be either a type of data (in lowercase characters) or a specific example (in uppercase characters).	char isascii (char, ch);
<b>Interface (Arial font):</b>		
Underlined, italic text with right arrow	A menu selection from the menu bar	<u>File</u> > <i>Save</i>
Bold characters	A window or dialog button to click	<b>OK, Cancel</b>
Characters in angle brackets < >	A key on the keyboard	<Tab>, <Ctrl-C>
<b>Documents (Arial font):</b>		
Italic characters	Referenced books	<i>MPLAB<sup>®</sup> IDE User's Guide</i>

## RECOMMENDED READING

This user's guide describes how to use MCP4728 Evaluation Board. Other useful documents are listed below. The following Microchip documents are available and recommended as supplemental reference resources.

### **PICkit™ Serial Analyzer User's Guide, DS51647**

Consult this document for instructions on how to use the PICkit Serial Analyzer hardware and software.

### **MCP4728 Data Sheet, "12-Bit, Quad Digital-to-Analog Converter with EEPROM Memory" DS22187**

This data sheet provides detailed information regarding for the MCP4728 Digital-to-Analog Converter.

## THE MICROCHIP WEB SITE

Microchip provides online support via our web site at [www.microchip.com](http://www.microchip.com). This web site is used as a means to make files and information easily available to customers. Accessible by using your favorite Internet browser, the web site contains the following information:

- **Product Support** – Data sheets and errata, application notes and sample programs, design resources, user's guides and hardware support documents, latest software releases and archived software
- **General Technical Support** – Frequently Asked Questions (FAQs), technical support requests, online discussion groups, Microchip consultant program member listing
- **Business of Microchip** – Product Selector Guide, latest Microchip press releases, listing of seminars and events, listings of Microchip sales offices, distributors and factory representatives

## CUSTOMER SUPPORT

Users of Microchip products can receive assistance through several channels:

- Distributor or Representative
- Local Sales Office
- Field Application Engineer (FAE)
- Technical Support
- Development Systems Information Line

Customers should contact their distributor, representative or field application engineer (FAE) for support. Local sales offices are also available to help customers. A listing of sales offices and locations is included in the back of this document.

Technical support is available through the web site at: <http://support.microchip.com>

## DOCUMENT REVISION HISTORY

### Revision A (June 2009)

- Initial Release of this Document.

# MCP4728 Evaluation Board User's Guide

---

NOTES:



---

---

## Chapter 1. Quick Start Instructions

---

---

### 1.1 INTRODUCTION

The following sections provide an overview of the MCP4728 Evaluation Board and instructions on how to program the DAC register and the EEPROM of the MCP4728 using the PICKit™ Serial Analyzer. The following sections cover the topics:

- Description of the MCP4728 Evaluation Board
- How to use the MCP4728 Evaluation Board with the PICKit Serial Analyzer

### 1.2 DESCRIPTION OF THE MCP4728 EVALUATION BOARD

The purpose of the MCP4728 Evaluation Board is to provide an easy way of evaluating the MCP4728's performance and functionality with a minimum of work.

The MCP4728 Evaluation Board contains a MCP4728 (which is a 4-channel, 12-bit Digital-to-Analog Converter), an interface connector for the PICKit Serial Analyzer, and I<sup>2</sup>C test point terminals. The user can evaluate this board by using the PICKit Serial Analyzer or by providing the I<sup>2</sup>C serial communication signals through the I<sup>2</sup>C test terminals.

Using the MCP4728 Evaluation Board, the user can evaluate the functionality of the MCP4728 device, such as: (a) Writing and reading the DAC registers and EEPROM of each channel, (b) Selecting the reference voltage, (c) Measuring the DAC output voltage, (d) Checking the LDAC pin feature, etc.

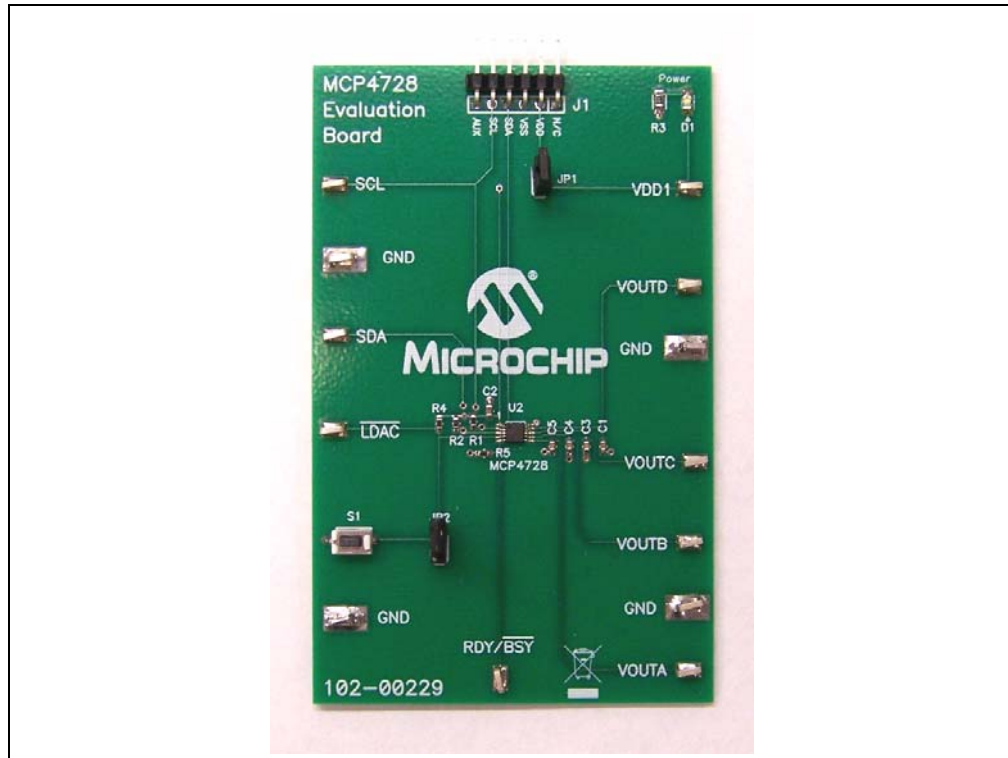
The MCP4728 Evaluation Board is designed to work friendly with the PICKit Serial Analyzer (DV164122). The PICKit Serial Analyzer (P/N: DV164122) is used for writing and reading the DAC configuration and register data. The PICKit Serial Analyzer consists of hardware and PC GUI. It is highly recommended that the users order this MCP4728 Evaluation Board and the PICKit Serial Analyzer at same time.

- The MCP4728 supports standard mode (100 kHz), fast mode (400 kHz), and high speed mode (3.4 MHz) of the I<sup>2</sup>C serial communications. This evaluation board has 5 k $\Omega$  for the I<sup>2</sup>C pull-up resistors and supports up to the fast mode. If the user needs to evaluate the device with high speed mode (3.4 MHz), please replace the R1 and R2 with lower values (less than 1 k $\Omega$ ).

<p><b>Note:</b> The MCP4728 Evaluation Board can be used without the PICKit Serial Analyzer as long as the V<sub>DD</sub>, SCL, and SDA are provided through the J1 connector. This board does not include MCU.</p>
---

The MCP4728 Evaluation Board has test points for SDL, SDA, and DAC outputs. By connecting an oscilloscope to these I<sup>2</sup>C test points, the user can examine the data communications through the I<sup>2</sup>C™ bus line and observe the resulting analog output (at V<sub>OUT</sub> terminals) using a multimeter. Refer to **Appendix A. "Schematic and Layouts"**.

# MCP4728 Evaluation Board User's Guide



**FIGURE 1-1:** Front View of the MCP4728 Evaluation Board.

**TABLE 1-1: TEST TERMINALS ON THE MCP4728 EVALUATION BOARD**

Test Terminals	Description
V <sub>OUT</sub> A	DAC channel A output
V <sub>OUT</sub> B	DAC channel B output
V <sub>OUT</sub> C	DAC channel C output
V <sub>OUT</sub> D	DAC channel D output
SCL	This terminal is connected to the I <sup>2</sup> C SCL pin of the MCP4728. (See <b>Note 1</b> ).
SDA	This terminal is connected to the I <sup>2</sup> C SDA pin of the MCP4728. (See <b>Note 1</b> ).
RDY/BUSY	This terminal is used to monitor the RDY/BUSY pin of the MCP4728 device.
LDAC	Access terminal to the LDAC pin of the MCP4728.
S1	Switch to change the logic input to the LDAC input pin. It provides logic "low" when pressed.
JP1	Jumper to select the V <sub>DD</sub> source to the MCP4728 Evaluation Board. If it is connected, the V <sub>DD</sub> from the J1 connector is connected. If disconnected, it selects the V <sub>DD</sub> source from VDD1 terminal.
JP2	Jumper to connect the LDAC pin to V <sub>SS</sub> . (You can disconnect this jumper when S1 is used.)
VDD1	V <sub>DD</sub> monitoring or connection pin. If the V <sub>DD</sub> is provided from J1 connector (PICKit Serial Analyzer), then this test point monitors the V <sub>DD</sub> voltage. You can also connect a new V <sub>DD</sub> to this test terminal.
GND	Connected to common ground plane of the PC Board.

**Note 1:** This terminal is used to monitor the SCL or SDA signals. You can also provide the SCL or SDA signals through these pins.

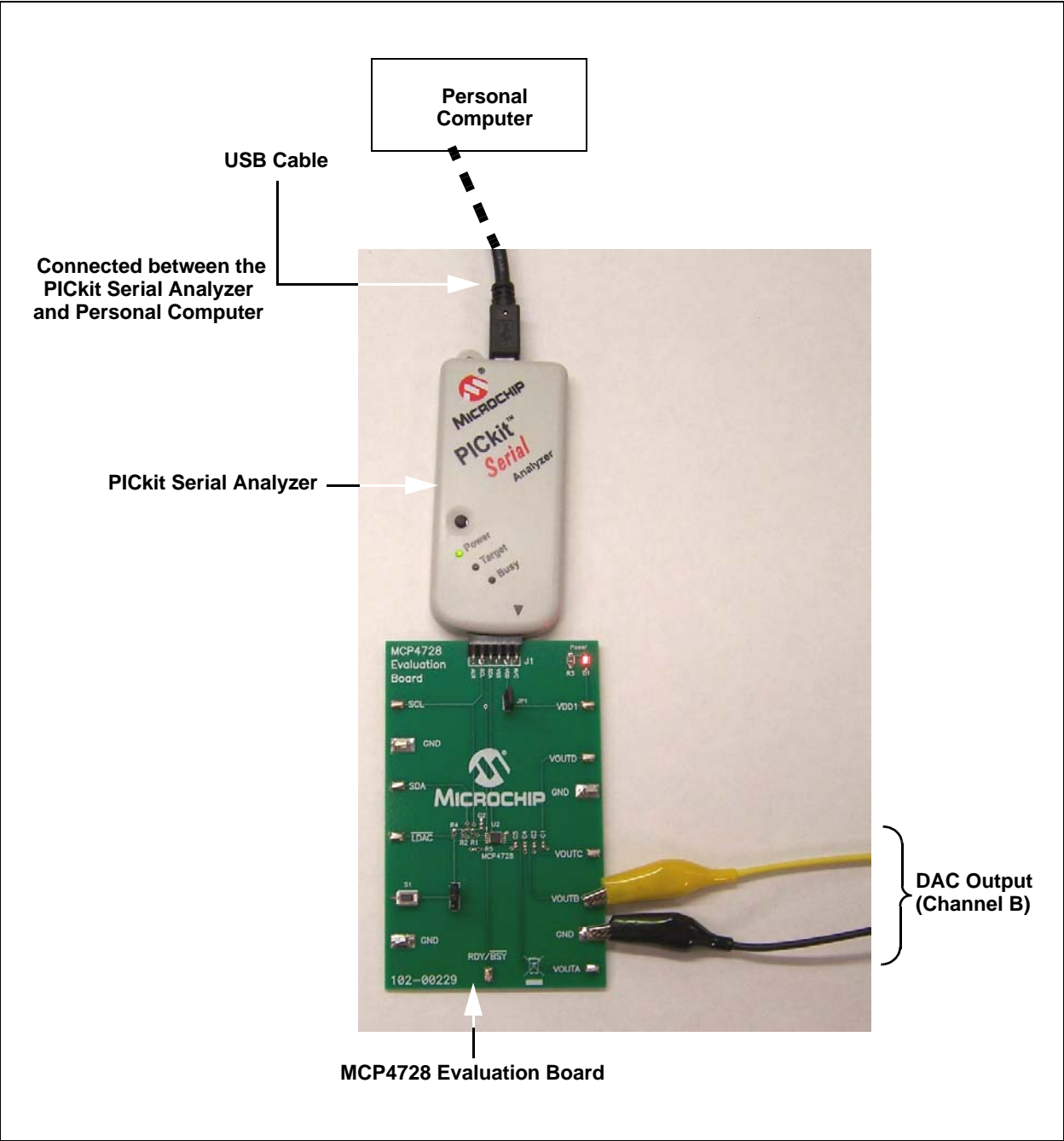
## 1.3 GETTING STARTED WITH PICKIT SERIAL ANALYZER

Figure 1-1 shows the MCP4728 Evaluation Board, and Figure 1-2 shows the connection of the MCP4728 Evaluation Board and PICKit Serial Analyzer.

The following steps describe how to use them together:

1. Connect the MCP4728 Evaluation Board's 6-pin socket to the PICKit Serial Analyzer as shown in Figure 1-2.
2. Connect the oscilloscope probes to the SCL and SDA test terminals (optional).
3. Connect a multimeter to one of the DAC's output test terminal.
4.  $V_{DD}$  Selection: You can use the  $V_{DD}$  from the PICKit Serial Analyzer or use your own external  $V_{DD}$ . The JP1 connector selects the  $V_{DD}$  path.
  - (a) Connect JP1, if using  $V_{DD}$  from PICKit Serial Analyzer,
  - (b) Disconnect JP1 and apply  $V_{DD}$  at  $V_{DD1}$  pin, if you are using an external  $V_{DD}$ .
- I<sup>2</sup>C device code of MCP4728: '1100'
- A2, A1, A0 Address Bits: Pre-programmed to '000'.
5. **Connecting  $V_{DD}$ :** LED D1 turns on when  $V_{DD}$  is applied. The PICKit Serial Analyzer will provide  $V_{DD}$  automatically, if it is connected to the PC. Make sure LED D1 turns on.
6. Use the PICKit Serial Analyzer PC GUI to send I<sup>2</sup>C write and read commands.

# MCP4728 Evaluation Board User's Guide



**FIGURE 1-2:** MCP4728 Evaluation Board with the PICkit Serial Analyzer.

## 1.3.1 PICKit Serial Analyzer PC Software Setup for the MCP4728 Evaluation Board

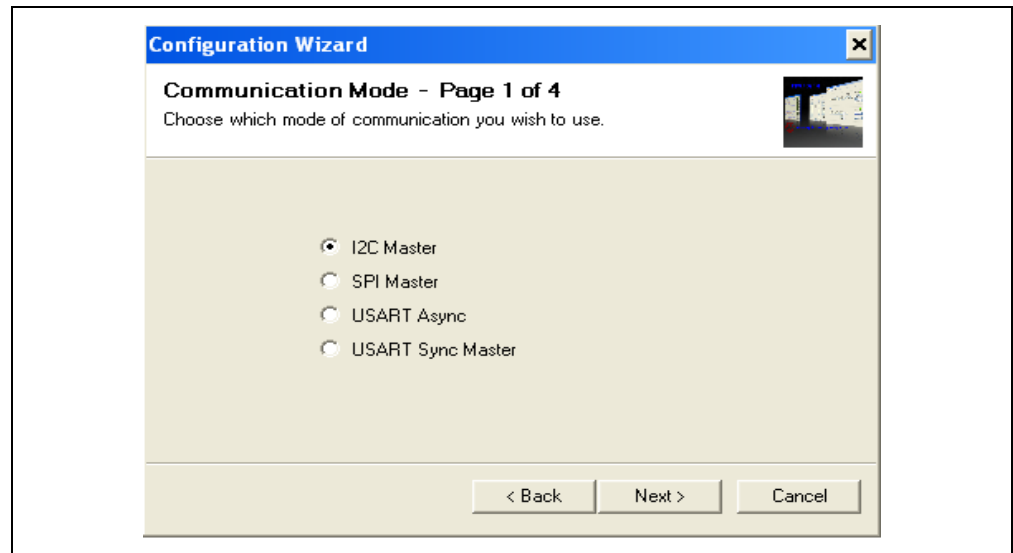
The following steps describe how to set up and use the PICKit Serial Analyzer PC Graphic User Interface (GUI).

1. Install the PICKit Serial Analyzer software onto your personal computer (PC).
2. Connect the USB cable between the PICKit Serial Analyzer and the PC.
3. Run the PICKit Serial PC Software: It will open to the following GUI. Click the **Next** button and follow the instructions.



**FIGURE 1-3:** PICKit Serial Analyzer Configuration Wizard Welcome Window.

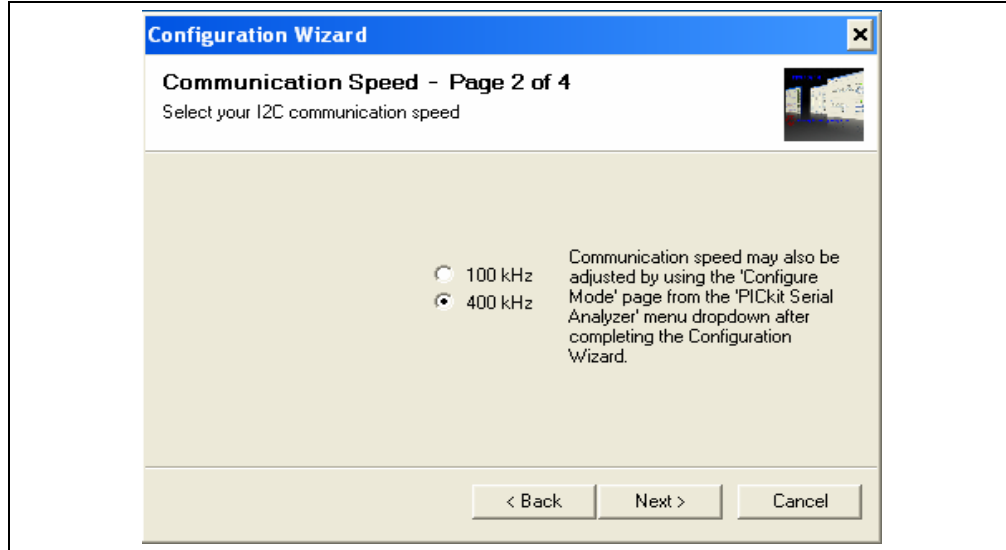
4. Select the Communication Mode type: **I<sup>2</sup>C Master**, and click the **Next** button.



**FIGURE 1-4:** Step 1 - Communication Mode Selection.

# MCP4728 Evaluation Board User's Guide

5. Select 100 kHz or 400 kHz. Either one will be fine. Click the **Next** button.

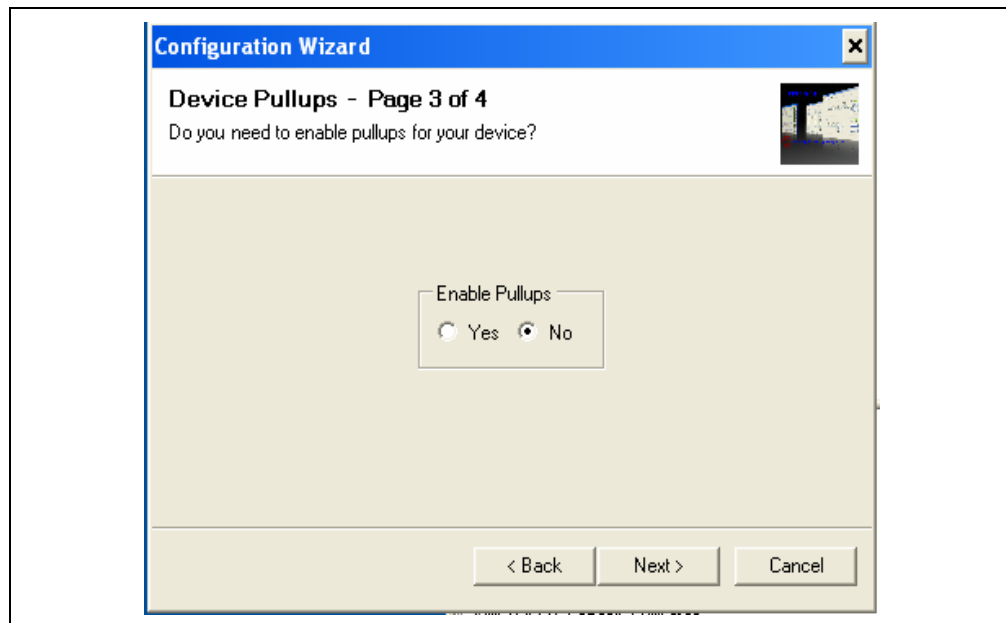


**FIGURE 1-5:** Step 2 - I<sup>2</sup>C Communication Speed Selection.

**Note:** The MCP4728 device supports the I<sup>2</sup>C bus data rate up to 3.4 MHz, but the current version of the PICkit Serial Analyzer supports the I<sup>2</sup>C bus data rate up to 400 kHz only.

6. Select **No** on Enable Pull-ups and click the **Next** button.

**Note:** The MCP4728 Evaluation Board has its own pull-up resistors.



**FIGURE 1-6:** Step 3 - Device Pull-Ups Window.

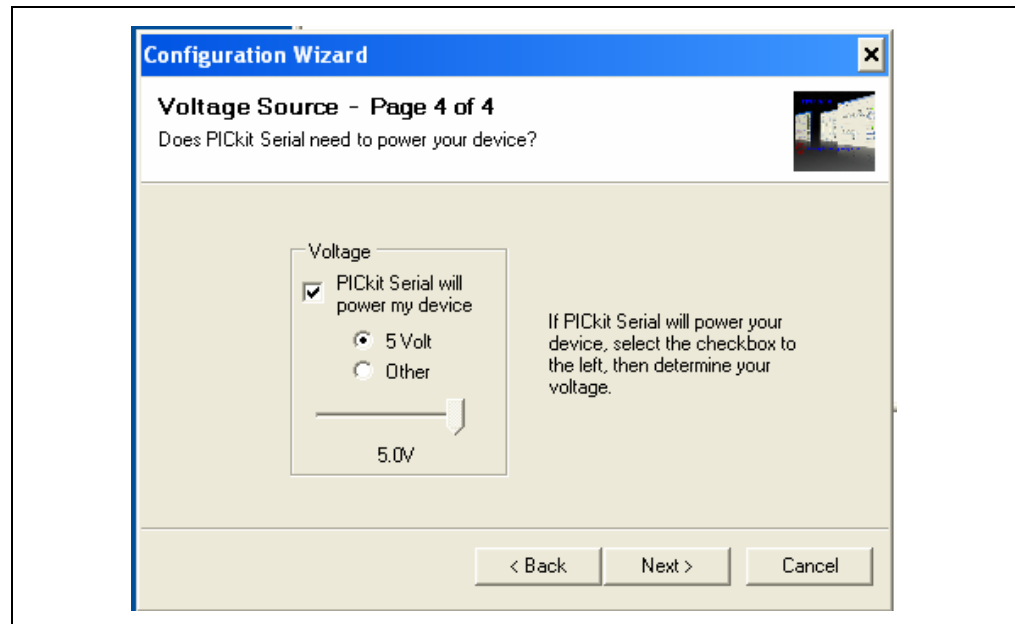
7. Select the  $V_{DD}$  voltage of the MCP4728 Evaluation Board and click the **Next** button.

### Case 1: When you use $V_{DD}$ from the PICkit Serial Analyzer:

If you choose **PICkit Serial will power your device** and **5 Volts** as shown below, the MCP4728 Evaluation Board is powered by the 5V DC from the PICkit Serial Analyzer through the JP1 jumper. In this case, make sure that the JP1 jumper on the MCP4728 Evaluation Board is connected.

### Case 2: When you use your own $V_{DD}$ :

You can also provide your own  $V_{DD}$  voltage by applying a  $V_{DD}$  voltage at VD1 test point. In this case, make sure that the JP1 jumper is disconnected.

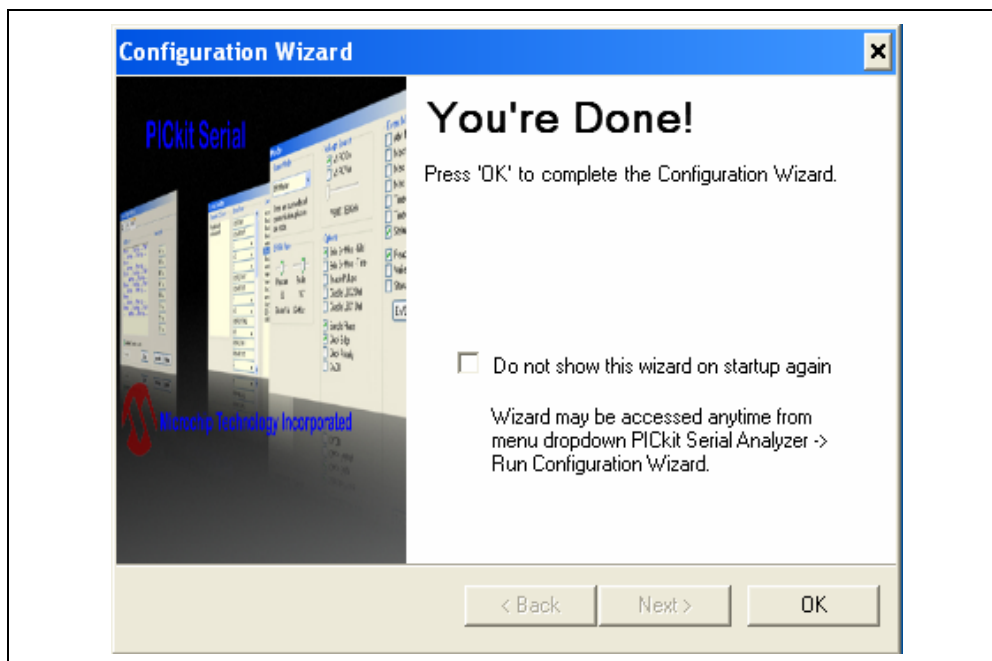


**FIGURE 1-7:** Step 4 - Voltage Source Selection Window.

# MCP4728 Evaluation Board User's Guide

---

- Click the **OK** button. You have made all of the PICkit Serial Analyzer Configuration Setups. You are now ready to read/write MCP4728 registers and EEPROM.



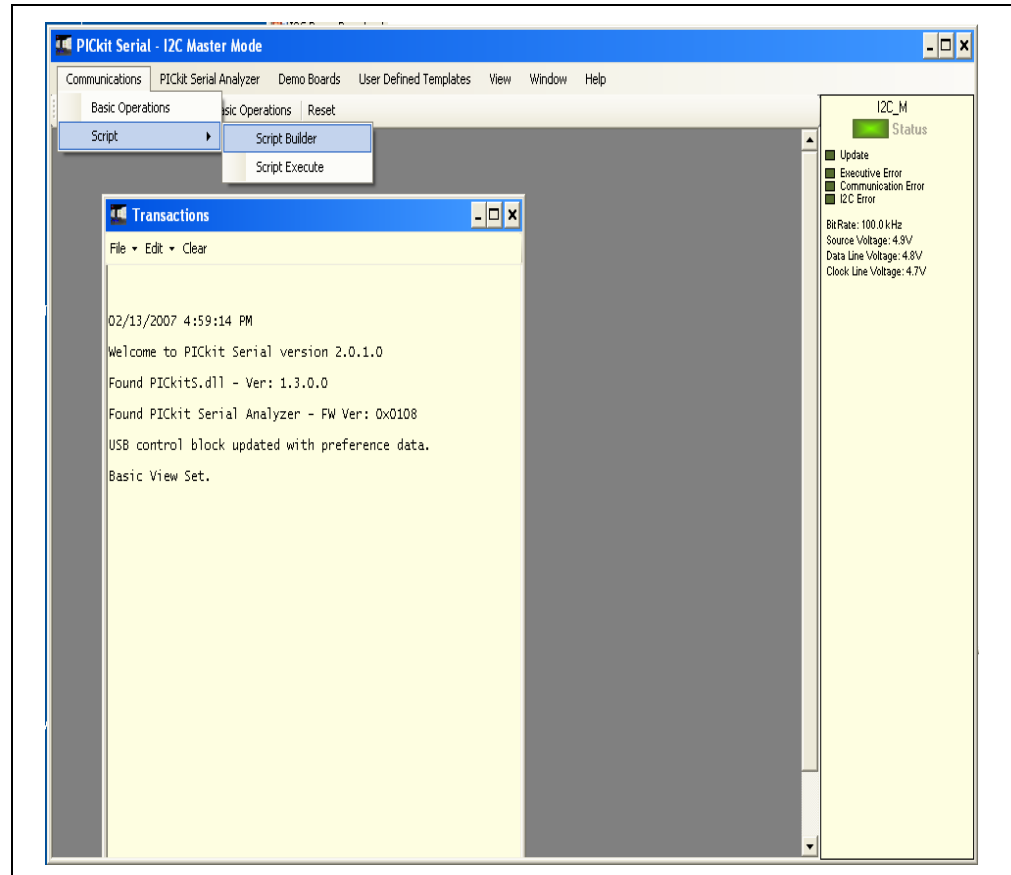
**FIGURE 1-8:** Configuration Wizard - Finishing Step.



## 1.3.2 Creating Script Files:

A script file that is running on the PICKit Serial PC GUI is needed for the communications between the PICKit Serial Analyzer and the MCP4728 Evaluation Board. The following steps show how to create script files and how to use them. Refer to the PICKit Serial Analyzer User's Guide (DS51647) for creating the Script file.

- Select **Communication -----> Script ----> Script Builder**



**FIGURE 1-9:** *Creating a Script File with Script Builder.*

# MCP4728 Evaluation Board User's Guide

## 1.3.2.1 CREATING SCRIPT FILE FOR CONFIGURATION BYTE WRITING

1. Click on **WriteBlockAddrA8** in “Example I<sup>2</sup>C Scripts” column.

This will result in filling in the spaces under the **Script Detail** column.

You can now modify the **Script Detail** column parameters by clicking with the right mouse button.

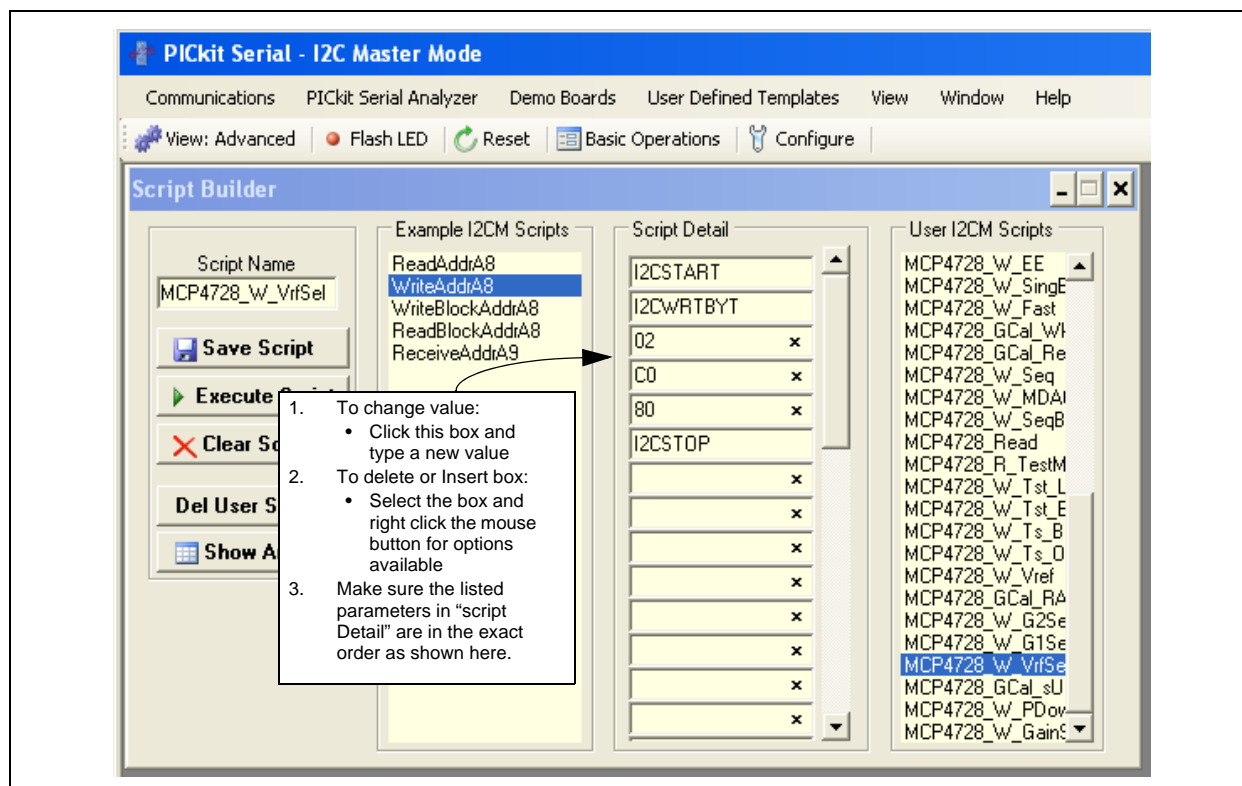
### How to modify the parameters box in Script Details:

1. Under the **Script Detail** box, select the item in the parameter box.
2. Right click the mouse button. An option box will appear to the right of your selection. These are the options available for the parameter selected.
3. Select the desired option and delete or insert the parameter box.
4. Keep the parameters in order as shown in the next examples.

**Note:** The following examples need knowledge on the MCP4728 Registers and Command protocols. Please refer to the **Appendix C. “MCP4728 Read/Write Commands”** and the MCP4728 Data Sheet for more details.

## 1.3.2.2 EXAMPLE 1: SELECTING VOLTAGE REFERENCE OF EACH DAC CHANNEL

You can select the voltage reference of each channel individually. The choices are: external ( $V_{DD}$ ) or internal reference voltage ( $V_{REF} = 2.048V$ ). Figure 1-10 shows an example of writing a script file on the PICKit Serial PC GUI.



**FIGURE 1-10:** Creating a new Script file to select  $V_{REF}$  of each DAC channel. In this example, external  $V_{REF}$  ( $V_{REF} = V_{DD}$ ) is selected for all DAC channels.

# Quick Start Instructions

- Modify the parameters in the **Script Detail** column as below:

Script Detail	
I2CSTART	*
I2CWRTBYT	*
02	-----> This means there are two bytes to send.
C0	-----> Address byte = 1100-0000 (See <b>Note</b> ).
80	-----> 1'st byte (000-0000) selecting external $V_{REF}$ .
I2CSTOP	*

**Note:** All 6 parameters above must be listed in order. The parameters with \* are not modifiable. The MCP4728 device on the evaluation board has I<sup>2</sup>C address bits (A2, A1, A0) = (0,0,0).

### 1.3.2.3 SAVE THE SCRIPT FILE AND PROGRAMMING THE MCP4728 DAC REGISTERS

1. Type in a script file name (i.e., MCP4728\_W\_VrfSel) in the space below the **Script Name** menu.
2. Click **Save Script** button.
3. Click **Execute Script** button.

**Note:** At this point, the PICkit Serial Analyzer transmits the I<sup>2</sup>C Write Command to the MCP4728 device. The saved file name will appear in the **Users I2C Scripts** column, and can be re-used any time by selecting the file name.

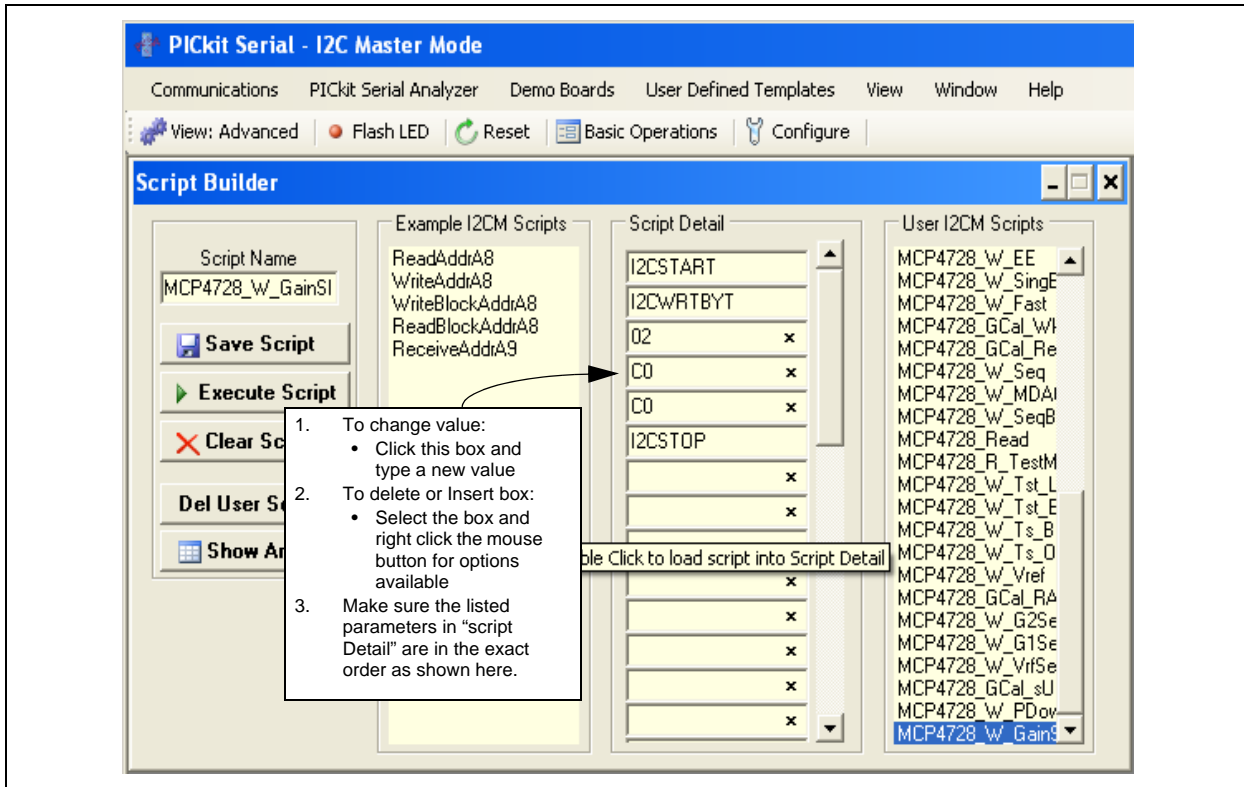
4. You can also see the SCL and SDA waveforms using an Oscilloscope.

**Note:** When you click on the "Execute Script" menu, the "Busy" LED on the PICkit Serial Analyzer will momentarily turn on and then turn off. If the LED remains ON, a communications problem has occurred. Remove the PICkit Serial Analyzer from your computer and recheck the parameter values, including the order of parameters under the "Script Detail" column including the I<sup>2</sup>C address of the device, and try again until the "Busy" LED turns OFF immediately after sending the I<sup>2</sup>C command.

# MCP4728 Evaluation Board User's Guide

## 1.3.2.4 EXAMPLE 2: SELECTING GAIN OF EACH DAC CHANNEL

You can select the Gain of each channel individually. Figure 1-11 shows an example of writing a new script file on the PICKit Serial PC GUI for selecting the gain option. In this example, Gain of 1 is selected.



**FIGURE 1-11:** Writing Script file to select  $V_{REF}$  of each DAC channel. In this example, Gain of 1 is selected for all DAC channels.

- Parameters in the Script Detail column:

Script Detail	
I2CSTART	*
I2CWRTBYT	*
02	-----> This means there are two bytes to send.
C0	-----> Address byte = 1100-0000 (See <b>Note</b> ).
C0	-----> Selecting the gain of each channel (0: Gain of 1, 1: gain of 2)
I2CSTOP	*

**Note:** All parameters above must be listed in order. The parameter above with \* are not modifiable. The MCP4728 device on the evaluation board has I<sup>2</sup>C address bits (A2, A1, A0) = (0,0,0).

## 1.3.2.5 SAVE THE SCRIPT FILE AND PROGRAMMING THE MCP4728 DAC REGISTERS

1. Type in any script name (i.e., MCP4728\_W\_GainSI) in the space below the **Script Name** menu.
2. Click **Save Script** button.
3. Click **Execute Script** button.

**Note:** At this point, the PICkit Serial transmits the I<sup>2</sup>C Write Command to the MCP4728 device. The saved file name will appear in **Users I2C Scripts** column, and can be re-used any time by selecting the file name.

4. You can also see the SCL and SDA waveforms using the Oscilloscope.

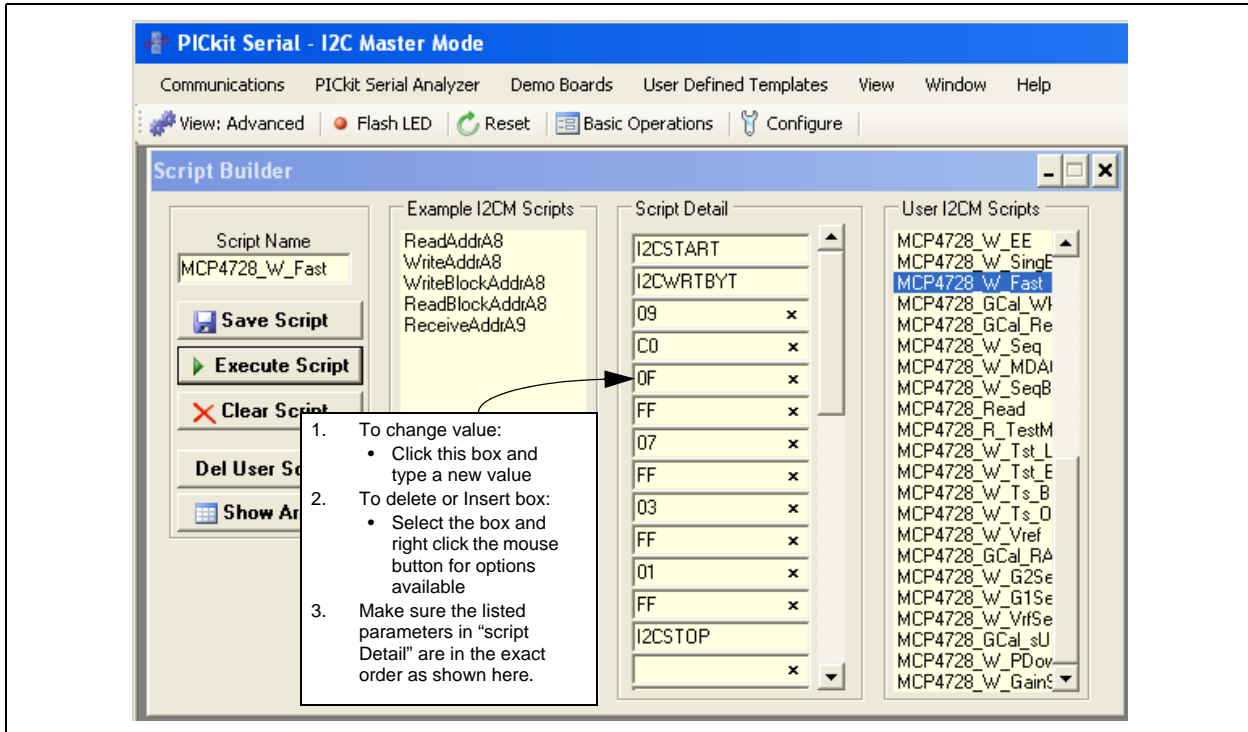
**Note:** When you click on the “Execute Script” menu, the “Busy” LED on the PICkit Serial Analyzer will momentarily turn on and then turn off. If the LED remains ON, a communications problem has occurred. Remove the PICkit Serial Analyzer from your computer and recheck the parameter values including the order of parameters under the “Script Detail” column including the I<sup>2</sup>C address of the device, and try again until the “Busy” LED turns OFF immediately after sending the I<sup>2</sup>C command.

# MCP4728 Evaluation Board User's Guide

## 1.3.2.6 EXAMPLE 3: WRITING DAC REGISTERS WITH A FAST WRITE COMMAND

**Note:** Please refer to the MCP4728 data sheet for the Fast Write Command structure before excising this example.

Figure 1-12 shows an example of writing a script file on PICkit Serial PC GUI for a Fast Write Command. This command writes to the DAC input registers and power-down selection bits. The data are sent sequentially from channel A to the channel D. EEPROM is not affected. This device updates the DAC output registers ( $V_{OUT}$ ) when LDAC pin is low.



**FIGURE 1-12:** Writing Script File to Write Each DAC Register with a Fast Write Command Using the PICkit Serial Analyzer.

- Parameters in the Script Detail column:

Script Detail	
I2CSTART	*
I2CWRTBYT	*
09	-----> This means there are nine bytes to send.
C0	-----> Address byte = 1100-0000 (See <b>Note</b> ).
0F	-----> 1st byte of DAC A Register (Channel A) = 0000-1111
FF	-----> 2nd byte of DAC A Register (Channel A) = 1111-1111
07	-----> 1st byte of DAC B Register (Channel B) = 0000-0111
FF	-----> 2nd byte of DAC B Register (Channel B) = 1111-1111
03	-----> 1st byte of DAC C Register (Channel C) = 0000-0011
FF	-----> 2nd byte of DAC C Register (Channel C) = 1111-1111
01	-----> 1st byte of DAC D Register (Channel D) = 0000 -0001
FF	-----> 2nd byte of DAC D Register (Channel D) = 1111-1111
I2CSTOP	*

**Note:** All parameters above must be listed in order. The parameter above with \* are not modifiable. The MCP4728 device on the evaluation board has I<sup>2</sup>C address bits (A2, A1, A0) = (0,0,0).

### 1.3.2.7 SAVE THE SCRIPT FILE AND PROGRAMMING THE MCP4728 DAC REGISTERS

- Type in any script name (i.e., MCP4728\_W\_Fast) in the space below the **Script Name** menu.
- Click **Save Script** button.
- Click **Execute Script** button.

**Note:** At this point, the PICKit Serial transmits the I<sup>2</sup>C Write Command to the MCP4728 device. The saved file name will appear in **Users I2C Scripts** column, and can be re-used any time by selecting the file name.

- You can also see the SCL and SDA waveforms using the Oscilloscope.

**Note:** When you click on the “Execute Script” menu, the “Busy” LED on the PICKit Serial Analyzer will momentarily turn on and then turn off. If the LED remains ON, a communications problem has occurred. Remove the PICKit Serial Analyzer from your computer and recheck the parameter values including the order of parameters under the “Script Detail” column including the I<sup>2</sup>C address of the device, and try again until the “Busy” LED turns OFF immediately after sending the I<sup>2</sup>C command.

- Read the V<sub>OUT</sub> voltage at the V<sub>OUT</sub> test pads:

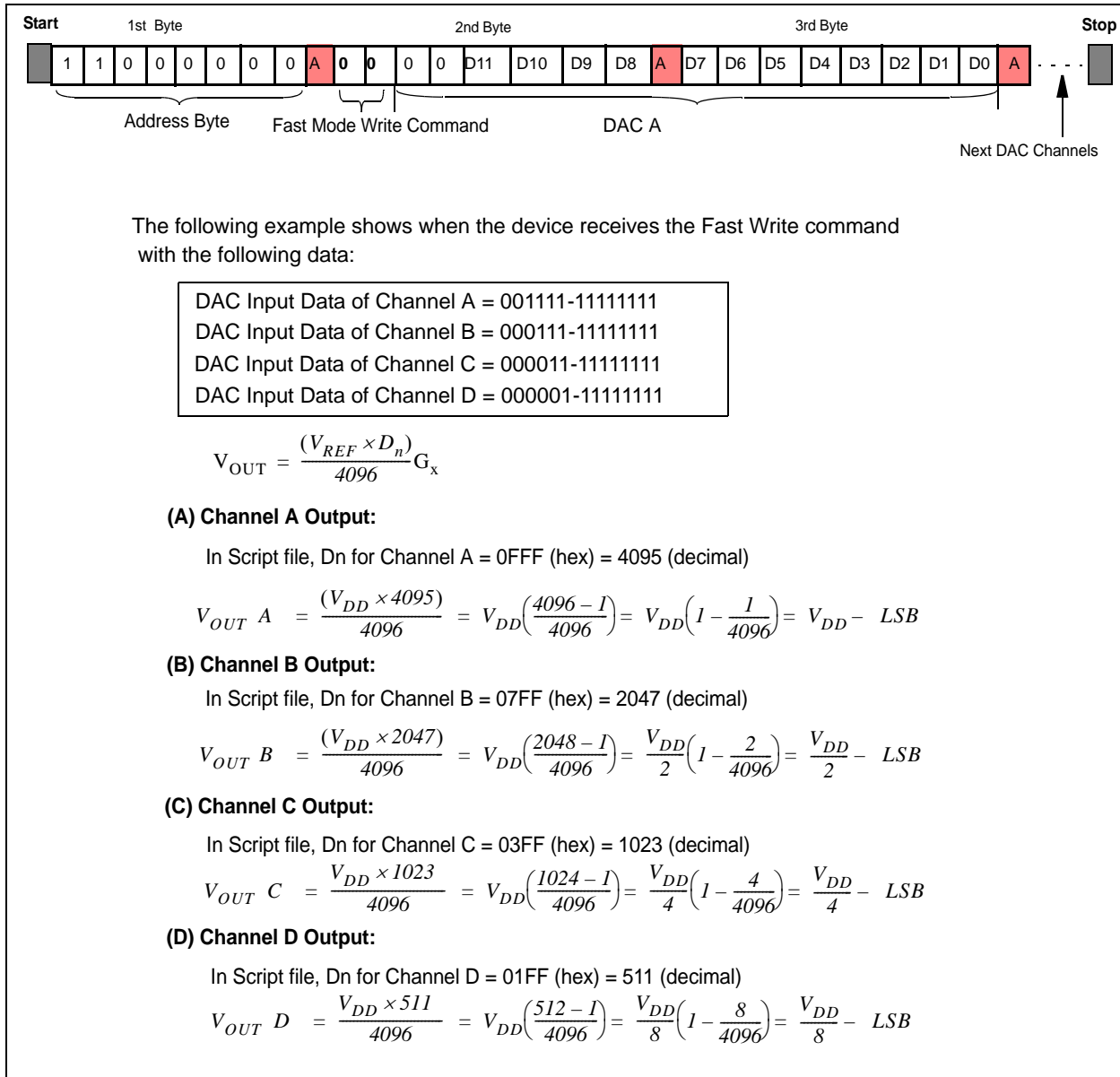
In order to update the DAC output register, the  $\overline{\text{LDAC}}$  pin must be “Low”.

- Press “S1” button in the MCP4728 Evaluation Board.

The device will update the V<sub>OUT</sub> as soon as the  $\overline{\text{LDAC}}$  pin switch S1 is pressed.

You can now measure the DAC output voltages (V<sub>OUT A</sub>, V<sub>OUT B</sub>, V<sub>OUT C</sub>, V<sub>OUT D</sub>) using a voltmeter. When Examples 1, 2, and 3 are executed sequentially, all channels use an internal reference. Figure 1-13 shows the expectation of each DAC channel outputs.

# MCP4728 Evaluation Board User's Guide



**FIGURE 1-13:**  $V_{OUT}$  for Example 3: Fast Write Command for Various  $V_{OUT}$ .  $V_{REF} = V_{DD}$  and Gain = 1 for All Channels.

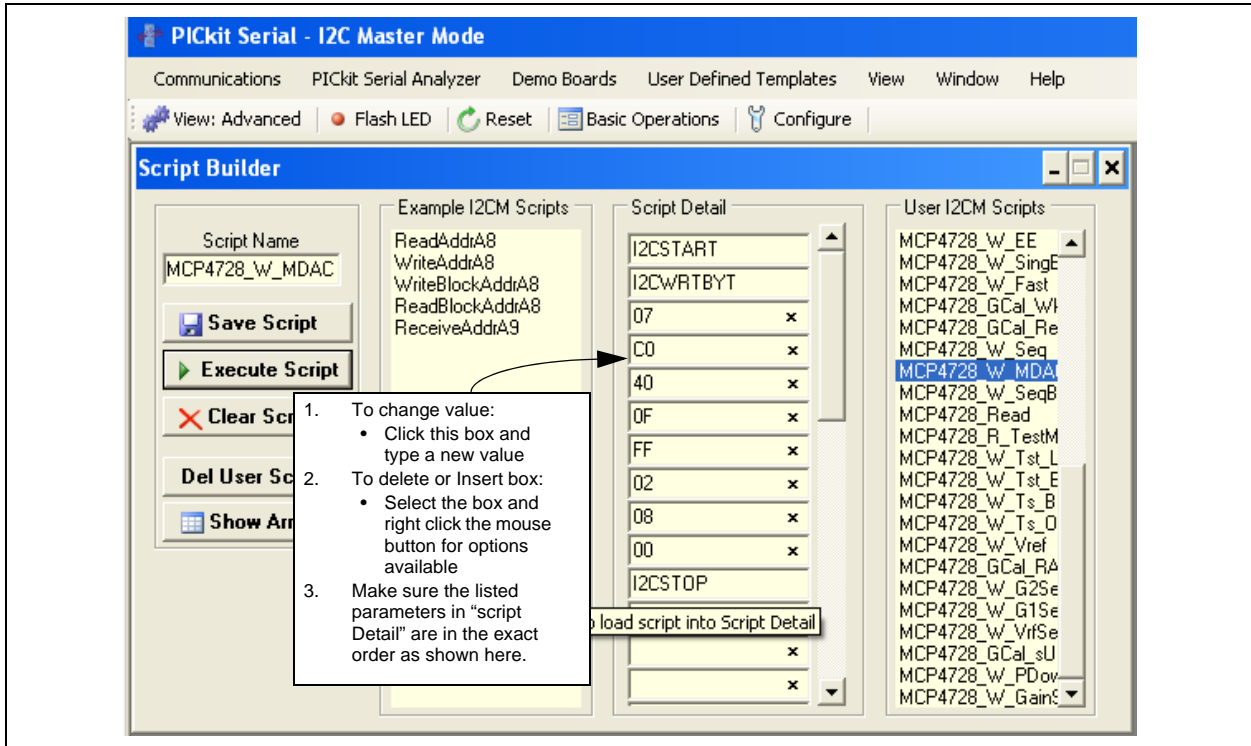


# Quick Start Instructions

## 1.3.2.8 EXAMPLE 4: MULTI-WRITE COMMAND FOR DAC INPUT REGISTERS

This command writes to the multiple DAC input registers, one register at a time. The writing channel register is defined by the DAC selection bits (DAC1, DAC0). EEPROM is not affected by this command.

Figure 1-14 shows an example of creating the PICKit Script file. In this example, the the PICKit Serial Analyzer sends a write command to the DAC input registers A and B.



**FIGURE 1-14:** Writing Script file to Write Channel A for FFFh and Channel B for 800h Using a Multi-write Command.

# MCP4728 Evaluation Board User's Guide

- Parameters in the Script Detail column:

Script Detail	
I2CSTART	*
I2CWRTBYT	*
07	-----> This means there are seven bytes to send.
C0	-----> Address byte = 1100-0000 (See <b>Note</b> ).
40	-----> Command Type and Selecting Channel A DAC
0F	-----> Configuration register bits and data nibble
FF	-----> Data byte
02	-----> Selecting Channel B DAC
08	-----> Configuration register bits and data nibble
00	-----> Data byte
I2CSTOP	*

**Note:** All parameters above must be listed in order. The parameters above with \* are not modifiable. The MCP4728 device on the evaluation board has I<sup>2</sup>C address bits (A2, A1, A0) = (0,0,0).

## 1.3.2.9 SAVE THE SCRIPT FILE AND PROGRAMMING THE MCP4728 DAC REGISTERS

- Type in any script name (i.e., MCP4728\_W\_MDAC) in the space below the **Script Name** menu.
- Click **Save Script** button.
- Click **Execute Script** button.

**Note:** At this point, the PICKit Serial transmits the I<sup>2</sup>C Write Command to the MCP4728 device. The saved file name will appear in **Users I2C Scripts** column, and can be re-used any time by selecting the file name.

- You can also see the SCL and SDA waveforms using the Oscilloscope.

**Note:** When you click on the "Execute Script" menu, the "Busy" LED on the PICKit Serial Analyzer will momentarily turn on and then turn off. If the LED remains ON, a communications problem has occurred. Remove the PICKit Serial Analyzer from your computer and recheck the parameter values including the order of parameters under the "Script Detail" column including the I<sup>2</sup>C address of the device, and try again until the "Busy" LED turns OFF immediately after sending the I<sup>2</sup>C command.

- Read the V<sub>OUT</sub> voltage at the V<sub>OUT</sub> test pins:

Since the  $\overline{\text{UDAC}}$  bit is set to "0" in the command, the device will update the V<sub>OUT A</sub> and V<sub>OUT B</sub> as soon as the command is executed regardless of the condition of the LDAC pin switch S1.

$$V_{OUT} = \frac{(V_{REF} \times D_n)}{4096} G_x$$

**(A) Channel A Output:**

In Script file, Dn for Channel A = 0FFF (hex) = 4095 (decimal)

$$V_{OUTA} = \frac{(V_{DD} \times 4095)}{4096} = V_{DD} \left( \frac{4096 - 1}{4096} \right) = V_{DD} \left( 1 - \frac{1}{4096} \right) = V_{DD} - LSB$$

**(B) Channel B Output:**

In Script file, Dn for Channel B = 0800 (hex) = 2048 (decimal)

$$V_{OUTB} = \frac{(V_{DD} \times 2048)}{4096} = \frac{V_{DD}}{2}$$

**(C) Channel C Output:**

No change. The device maintains its output with previous settings.

**(D) Channel D Output:**

No change. The device maintains its output with previous settings.

Where:

$V_{REF}$	=	$V_{DD}$ if external VREF is selected
	=	2.048V if internal VREF is selected.
$D_n$	=	Input code
LSB	=	$V_{REF}/4096$

Note that Dn and Gain ( $G_x$ ) must be selected with the following conditions:

$$V_{OUT} = \frac{(V_{REF} \times D_n)}{4096} G_x \leq V_{DD}$$

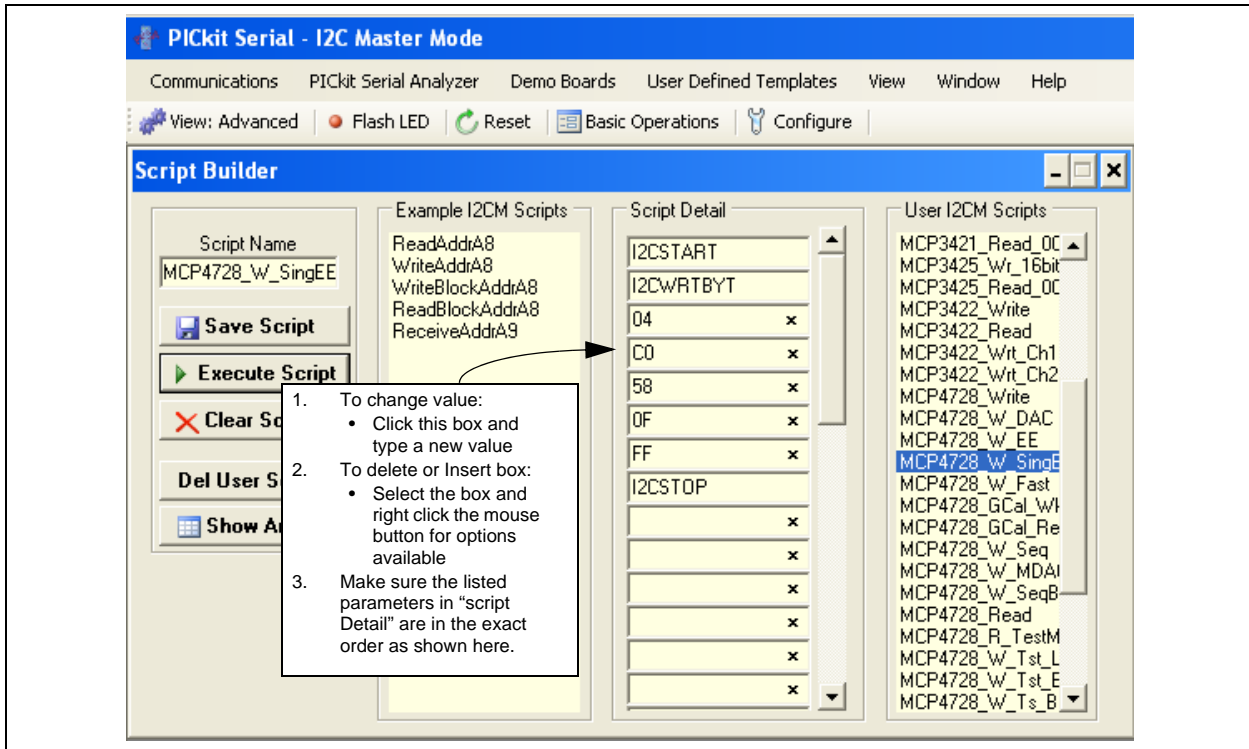
**Figure 1-15:**  $V_{OUT}$  for Example 4: Multi-Write Command for Channels A and B with  $V_{REF} = V_{DD}$  and Gain = 1.

# MCP4728 Evaluation Board User's Guide

## 1.3.2.10 EXAMPLE 5: SINGLE WRITE COMMAND FOR DAC INPUT REGISTER AND EEPROM

This command writes to a single DAC input register and its EEPROM. Both input register and EEPROM are written at the acknowledge pulse of the input data byte. The EEPROM program activity can be monitored through the RDY/BSY bit and pin. See the MCP4728 data sheet for details.

Figure 1-16 shows an example of writing a script file. In this example, the PICKit Serial Analyzer sends a single write command to the MCP4728 for the DAC A (Channel A) input register.



**FIGURE 1-16:** Writing Script File to Write the Channel A Register and its EEPROM with FFFh Using a Single Write Command. The Channel A output is updated immediately with the ACK Pulse. This example uses UDAC Bit, instead of using LDAC pin, to update the DAC output.

- Parameters in the Script Detail column:

Script Detail	
I2CSTART	*
I2CWRTBYT	*
04	-----> This means there are four bytes to send.
C0	-----> Address byte = 1100-0000 (See <b>Note</b> ).
58	-----> Command Type and selection of Channel A.
0F	-----> Configuration register bits and data nibble for Channel A.
FF	-----> Data byte for Channel A (register and its EEPROM).
I2CSTOP	*

**Note:** All parameters above must be listed in order. The parameter above with \* are not modifiable. The MCP4728 device on the evaluation board has I<sup>2</sup>C address bits (A2, A1, A0) = (0,0,0).

## 1.3.2.11 SAVE THE SCRIPT FILE AND PROGRAMMING THE MCP4728 DAC REGISTERS

1. Type in any script name (i.e., MCP4728\_W\_SingEE) in the space below the **Script Name** menu.
2. Click **Save Script** button.
3. Click **Execute Script** button.

**Note:** At this point, the PICkit Serial transmits the I<sup>2</sup>C Write Command to the MCP4728 device. The saved file name will appear in **Users I2C Scripts** column, and can be re-used any time by selecting the file name.

4. You can also see the SCL and SDA waveforms using the Oscilloscope.

**Note:** When you click on the “Execute Script” menu, the “Busy” LED on the PICkit Serial Analyzer will momentarily turn on and then turn off. If the LED remains ON, a communications problem has occurred. Remove the PICkit Serial Analyzer from your computer and recheck the parameter values including the order of parameters under the “Script Detail” column including the I2C address of the device, and try again until the “Busy” LED turns OFF immediately after sending the I<sup>2</sup>C command.

5. Read the V<sub>OUT</sub> voltage at the V<sub>OUT</sub> test pins:

Since the  $\overline{\text{UDAC}}$  bit is set to “0” in the command, the device will update the channel A (V<sub>OUT A</sub>) output as soon as the command is executed regardless of the condition of the LDAC pin switch S1.

# MCP4728 Evaluation Board User's Guide

$$V_{OUT} = \frac{(V_{REF} \times D_n)}{4096} G_x$$

**(A) Channel A Output:**

In Script file, D<sub>n</sub> for Channel A = 0FFF (hex) = 4095 (decimal)

$$V_{OUTA} = \frac{(V_{DD} \times 4095)}{4096} = V_{DD} \left( \frac{4096 - 1}{4096} \right) = V_{DD} \left( 1 - \frac{1}{4096} \right) = V_{DD} - LSB$$

**(B) Channel B Output:**

No change. Keep its output with previous settings.

**(C) Channel C Output:**

No change. Keep its output with previous settings.

**(D) Channel D Output:**

No change. Keep its output with previous settings.

Where:

$$\begin{aligned} V_{REF} &= V_{DD} \text{ if external } V_{REF} \text{ is selected} \\ &= 2.048V \text{ if internal } V_{REF} \text{ is selected.} \\ D_n &= \text{Input code} \\ LSB &= V_{REF}/4096 \end{aligned}$$

Note that D<sub>n</sub> and Gain (G<sub>x</sub>) must be selected with the following conditions:

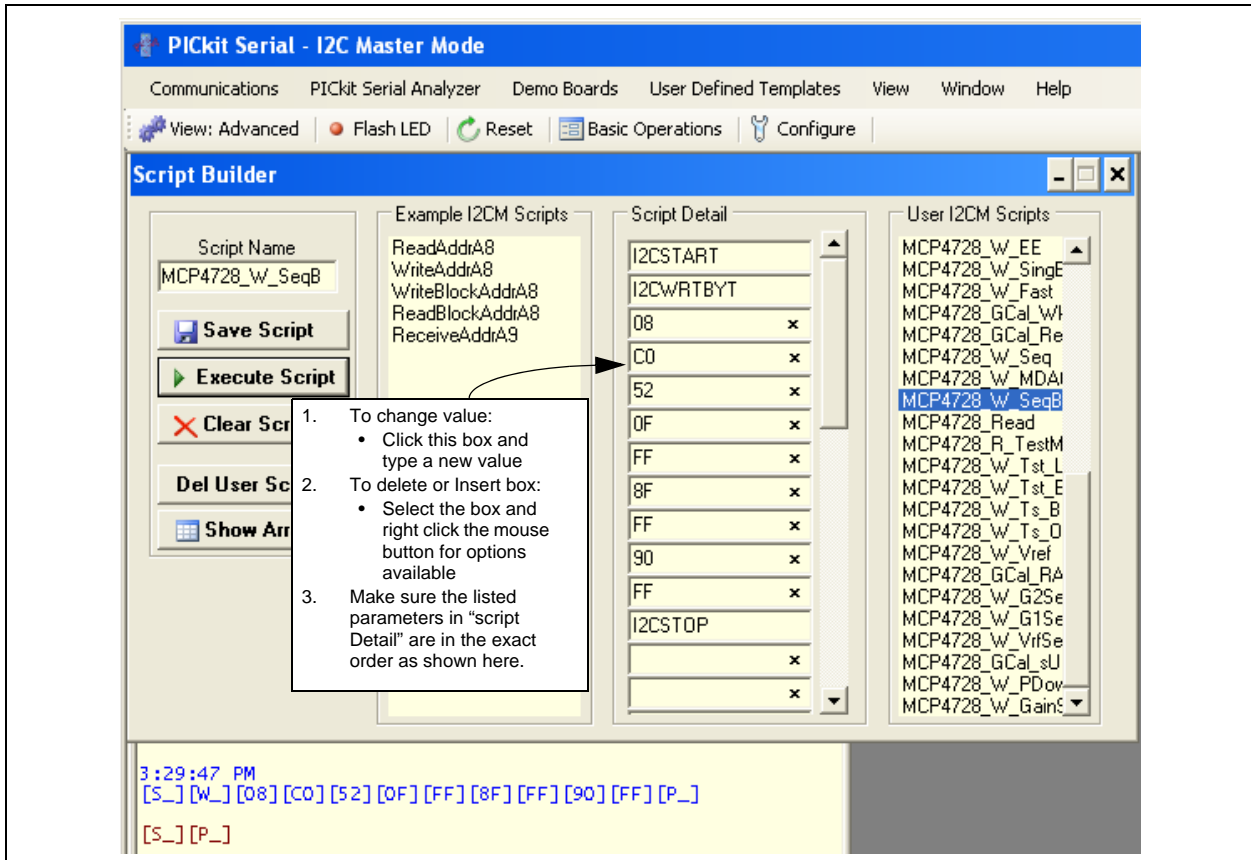
$$V_{OUT} = \frac{(V_{REF} \times D_n)}{4096} G_x \leq V_{DD}$$

**FIGURE 1-17:**  $V_{OUT}$  for Example 5: Single Write Command for Channel A:  $V_{REF} = V_{DD}$  and Gain = 1.

## 1.3.2.12 EXAMPLE 6: SEQUENTIAL WRITE FOR DAC INPUT REGISTERS AND EEPROM

This command writes to the DAC input registers and EEPROM sequentially from a start channel to the channel D. The input register is written at the ACK pulse of the input data byte of each register. However, the EEPROM are written altogether at the same time sequentially at the end of the last byte. The EEPROM writing activity can be monitored through the RDY/BSY bit and pin. See the MCP4728 data sheet for details.

Figure 1-18 shows an example of writing a script file on PICKit Serial PC GUI for this command.



**FIGURE 1-18:** Writing Script file to write the Channel B to Channel D. This command writes to both the input registers and EEPROM: (a) Channel B Settings:  $V_{REF} = V_{DD}$  and Gain = 1. (b) Channel C Settings:  $V_{REF} = \text{Internal (2.048V)}$ , Gain = 1. (c) Channel D Settings:  $V_{REF} = \text{Internal (2.048V)}$ , Gain = 2. The DAC outputs are updated immediately with the ACK pulse. This example uses the UDAC bit to update the DAC outputs.

# MCP4728 Evaluation Board User's Guide

- Parameters in the Script Detail column:

Script Detail	
I2CSTART	*
I2CWRTBYT	*
08	-----> This means there are eight bytes to send.
C0	-----> Address byte = 1100-0000 (See <b>Note</b> ).
52	-----> Command Type and Ch. B is a starting channel
0F	-----> Configuration register bits and data nibble for Ch. B
FF	-----> Data byte for Ch. B
8F	-----> Configuration register bits and data nibble for Ch. C
FF	-----> Data byte for Ch. C
90	-----> Configuration register bits and data nibble for Ch. D
FF	-----> Data byte for Ch. D
I2CSTOP	*

**Note:** All parameters above must be listed in order. The parameter above with \* are not modifiable. The MCP4728 device on the evaluation board has I<sup>2</sup>C address bits (A2, A1, A0) = (0,0,0).

## 1.3.2.13 SAVE THE SCRIPT FILE AND PROGRAMMING THE MCP4728 DAC REGISTERS

- Type in any script name (i.e., MCP4728\_W\_SeqB) in the space below the **Script Name** menu.
- Click **Save Script** button.
- Click **Execute Script** button.

**Note:** At this point, the PICKit Serial transmits the I<sup>2</sup>C Write Command to the MCP4728 device. The saved file name will appear in **Users I2C Scripts** column, and can be re-used any time by selecting the file name.

- You can also see the SCL and SDA waveforms using the Oscilloscope.

**Note:** When you click on the "Execute Script" menu, the "Busy" LED on the PICKit Serial Analyzer will momentarily turn on and then turn off. If the LED remains ON, a communications problem has occurred. Remove the PICKit Serial Analyzer from your computer and recheck the parameter values including the order of parameters under the "Script Detail" column including the I<sup>2</sup>C address of the device, and try again until the "Busy" LED turns OFF immediately after sending the I<sup>2</sup>C command.

- Read the  $V_{OUT}$  voltage at the  $V_{OUT}$  test terminals:

Since the  $\overline{UDAC}$  bit is set to "0" in the command, the device will update the  $V_{OUT}$  B, C, and D outputs as soon as the command is executed regardless of the condition of the LDAC pin switch S1.



$$V_{OUT} = \frac{(V_{REF} \times D_n)}{4096} G_x$$

**(A) DAC A Output:**

No change. Keep its output with previous settings.

**(B) DAC B Output:**

In Script file,  $V_{REF} = V_{DD}$ , Gain ( $G_x$ ) = 1, Dn for Channel B = 0FFF (hex) = 4095 (decimal)

$$V_{OUTB} = \frac{(V_{DD} \times 4095)}{4096} G_x = V_{DD} \left( \frac{4096 - 1}{4096} \right) = V_{DD} \left( 1 - \frac{1}{4096} \right) = V_{DD} - LSB$$

**(C) DAC C Output:**

In Script file,  $V_{REF} = \text{Internal}$ , Gain ( $G_x$ ) = 1, Dn for Channel C = 0FFF (hex) = 4095 (decimal)

$$V_{OUTC} = \frac{(V_{REF} \times 4095)}{4096} G_x = V_{REF} \left( \frac{4096 - 1}{4096} \right) = V_{REF} \left( 1 - \frac{1}{4096} \right) = V_{REF} - LSB$$

$$= 2.0475$$

where  $V_{REF} = \text{internal} = 2.048\text{V}$ ,  $LSB = 0.5\text{ mV}$

**(D) DAC D Output:**

In Script file,  $V_{REF} = \text{Internal}$ , Gain = 2, Dn for Channel D = 00FF (hex) = 255 (decimal)

$$V_{OUTD} = \frac{V_{REF} \times 255}{4096} G_x = V_{REF} \left( \frac{255}{4096} \right) 2 = V_{REF} (0.06226) (2) = 0.255V$$

where  $V_{REF} = \text{internal} = 2.048\text{V}$

Where:

$$V_{REF} = V_{DD} \text{ if external } V_{REF} \text{ is selected}$$

$$= 2.048\text{V} \text{ if internal } V_{REF} \text{ is selected.}$$

$$D_n = \text{Input code}$$

$$LSB = V_{REF}/4096$$

Note that Dn and Gain ( $G_x$ ) must be selected with the following conditions:

$$V_{OUT} = \frac{(V_{REF} \times D_n)}{4096} G_x \leq V_{DD}$$

**FIGURE 1-19:**  $V_{OUT}$  for Example 6:  $V_{OUT}$  after Sequential Write Command.

# MCP4728 Evaluation Board User's Guide

## 1.3.2.14 EXAMPLE 7: TESTING EEPROM FEATURES

The device will upload the EEPROM data to both input and output DAC registers (a) during power-up sequence or (b) when it receives the General Call Reset command. One of these conditions makes the analog outputs available immediately with their current EEPROM settings. Note that the Power-Down bit must be cleared for the output.

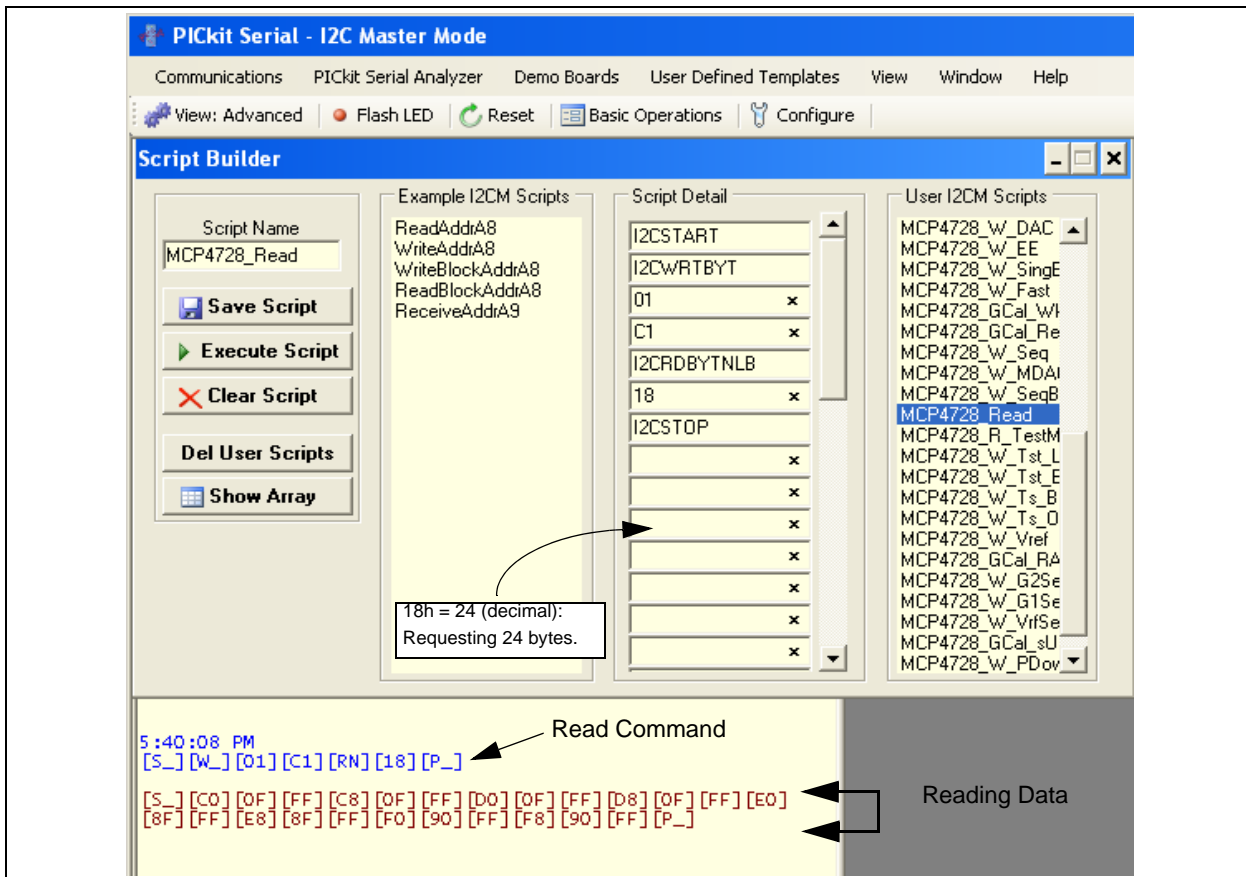
### • Testing Procedure:

- Write to the EEPROM with one of the examples shown earlier (i.e., **Section 1.3.2.12 “Example 6: Sequential Write for DAC Input Registers and EEPROM”**).
- Measure and record the analog voltage of each channel ( $V_{OUT}$ ) using a multimeter.
- Turn-off the  $V_{DD}$  of the device. If you are using the  $V_{DD}$  from the PICKit Serial Analyzer, disconnect JP1 connect.
- Turn-back on the  $V_{DD}$  again and measure the analog voltage ( $V_{OUT}$ ) of each channel again. Confirm the  $V_{OUT}$  is the same as in Step (b).

## 1.3.2.15 EXAMPLE 8: READING DAC REGISTERS AND EEPROM

This example shows how to read back the DAC input registers and EEPROM data.

Figure 1-20 shows the PICKit Serial script file to read all DAC input registers and EEPROM data. Once this file is executed, the PC GUI will show you the contents of the registers and EEPROM.



**FIGURE 1-20:** Reading the DAC Registers and its EEPROM with a Read Command. See Figure 1-21 for Details in Reading Data.

**Note:** In Figure 1-20, the script file called “MCP4728\_Read” was created, saved and executed.

```

5:40:08 PM
[S_] [W_] [01] [C1] [RN] [18] [P_]
DAC A Register DAC A EEPROM DAC B Register DAC B EEPROM
[S_] [C0] [0F] [FF] [C8] [0F] [FF] [D0] [0F] [FF] [D8] [0F] [FF] [E0]
[8F] [FF] [E8] [8F] [FF] [F0] [90] [FF] [F8] [90] [FF] [P_]
DAC C Register DAC C EEPROM DAC D Register DAC C EEPROM
    
```

Ch. A Register: C0-0F-FF:	$V_{REF} = V_{DD}$ , $G_A = x1$ , Data = FFFh
Ch. A EEPROM: C8-0F-FF:	$V_{REF} = V_{DD}$ , $G_A = x1$ , Data = FFFh
Ch. B Register: D0-0F-FF:	$V_{REF} = V_{DD}$ , $G_A = x1$ , Data = FFFh
Ch. B EEPROM: D8-0F-FF:	$V_{REF} = V_{DD}$ , $G_A = x1$ , Data = FFFh
Ch. C Register: E0-8F-FF:	$V_{REF} = V_{DD}$ , $G_A = x1$ , Data = FFFh
Ch. C EEPROM: E8-0F-FF:	$V_{REF} = V_{DD}$ , $G_A = x1$ , Data = FFFh
Ch. D Register: F0-90-FF:	$V_{REF} = V_{DD}$ , $G_A = x2$ , Data = 0FFh
Ch. D EEPROM: F8-90-FF:	$V_{REF} = V_{DD}$ , $G_A = x2$ , Data = 0FFh

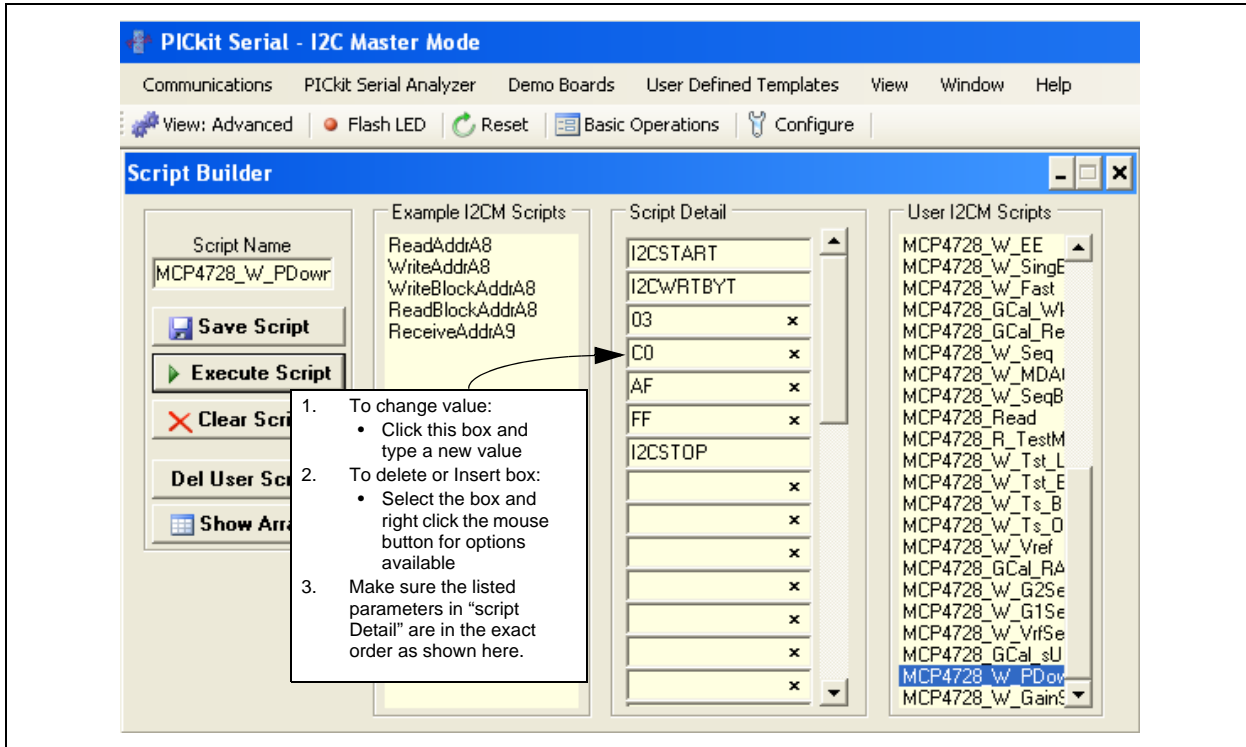
**FIGURE 1-21:** The contents of the Registers and EEPROM. The order of the contents: Channel A Register and EEPROM, and Channel B Register and EEPROM, and so on sequentially. See the Read Command and Device Output details in MCP4728 Data Sheet.

# MCP4728 Evaluation Board User's Guide

## 1.3.2.16 EXAMPLE 9: WRITE POWER-DOWN SELECTION BITS IN DAC INPUT REGISTER

This command writes power-down bits to the DAC input registers.

Figure 1-22 shows an example of writing a new script file for Power-Down mode.



**FIGURE 1-22:** Writing Script file to write the power-down bits. The channel outputs are updated immediately with the ACK pulse. This command does not require UDAC bit or LDAC pin change.

- Parameters in the Script Detail column:

Script Detail	
I2CSTART	*
I2CWRTBYT	*
03	-----> This means there are three bytes to send.
C0	-----> Address byte = 1100-0000 (See <b>Note</b> ).
AF	-----> Command Type and Power-Down bits for Chs. A and B.
FF	-----> Power-Down bits for Channels C and D.
I2CSTOP	*

**Note:** All parameters above must be listed in order. The parameter above with \* are not modifiable. The MCP4728 device on the evaluation board has I<sup>2</sup>C address bits (A2, A1, A0) = (0,0,0).

## 1.3.2.17 SAVE THE SCRIPT FILE AND PROGRAMMING THE MCP4728 DAC REGISTERS

1. Type in any script name (i.e., MCP4728\_W\_PDown) in the space below the **Script Name** menu.
2. Click **Save Script** button.
3. Click **Execute Script** button.

**Note:** At this point, the PICKit Serial transmits the I<sup>2</sup>C Write Command to the MCP4728 device. The saved file name will appear in **Users I2C Scripts** column, and can be re-used any time by selecting the file name.

4. You can also see the SCL and SDA waveforms using the Oscilloscope.

**Note:** When you click on the “Execute Script” menu, the “Busy” LED on the PICKit Serial Analyzer will momentarily turn on and then turn off. If the LED remains ON, a communications problem has occurred. Remove the PICKit Serial Analyzer from your computer and re-check the parameter values including the order of parameters under the “Script Detail” column including the I<sup>2</sup>C address of the device, and try again until the “Busy” LED turns OFF immediately after sending the I<sup>2</sup>C command.

5. Read the V<sub>OUT</sub> voltage at the V<sub>OUT</sub> test pins:

Once this command is executed, all analog voltage outputs (V<sub>OUT</sub>) will be “zero”, and the analog output pins (V<sub>OUT</sub>) are internally connected with about 500 kΩ.

# MCP4728 Evaluation Board User's Guide

---

NOTES:



# MCP4728 EVALUATION BOARD USER'S GUIDE

---

---

## Appendix A. Schematic and Layouts

---

---

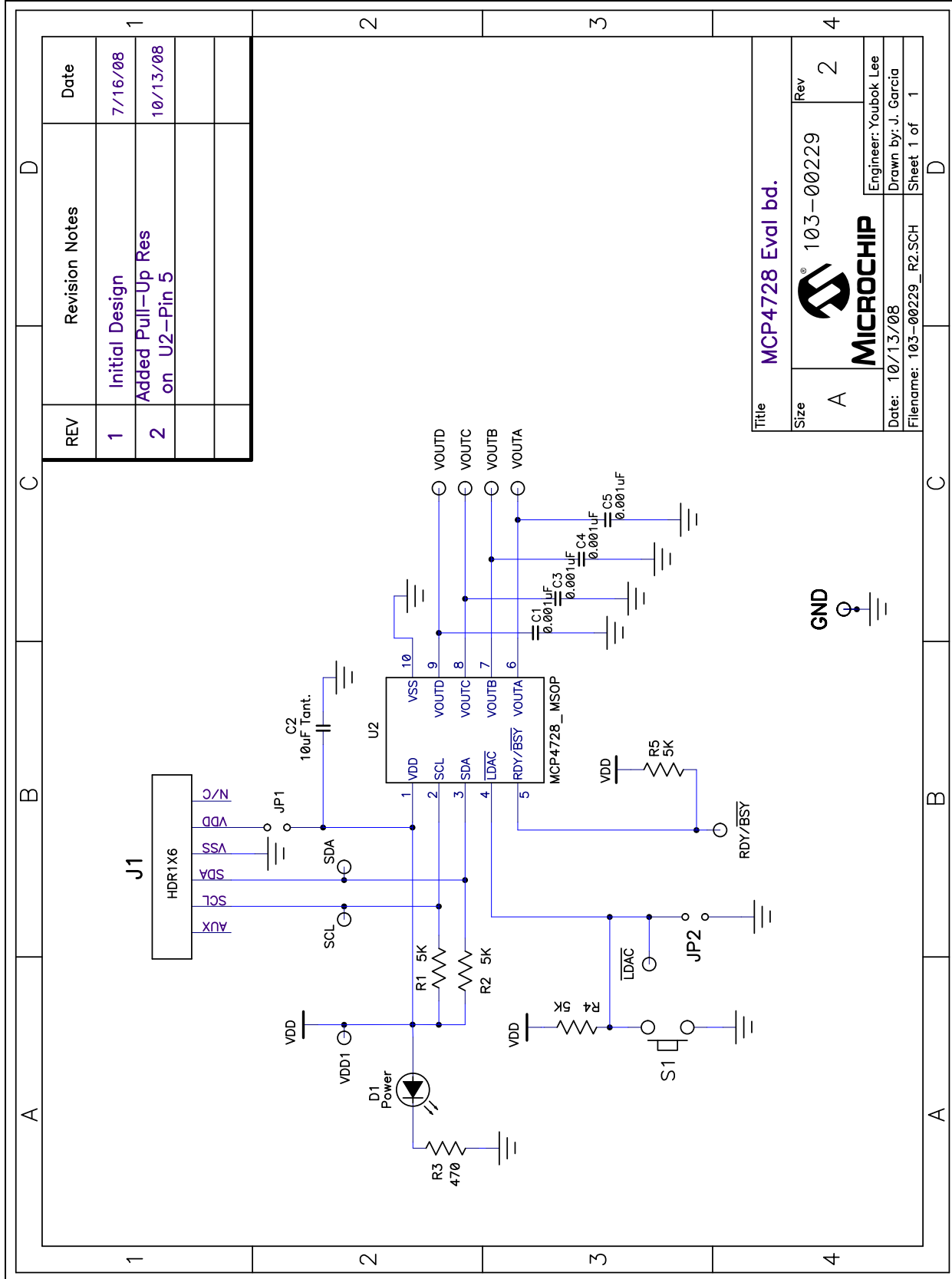
### A.1 INTRODUCTION

This appendix contains the following schematics and layouts for the MCP4728 Evaluation Board:

- Board – Schematic
- Board – Top Silk, Top Pads, and Top Copper Layer
- Board – Top Copper and Pads Layer
- Board – Top Pads and Silk Layer
- Board – Bottom Copper Layer

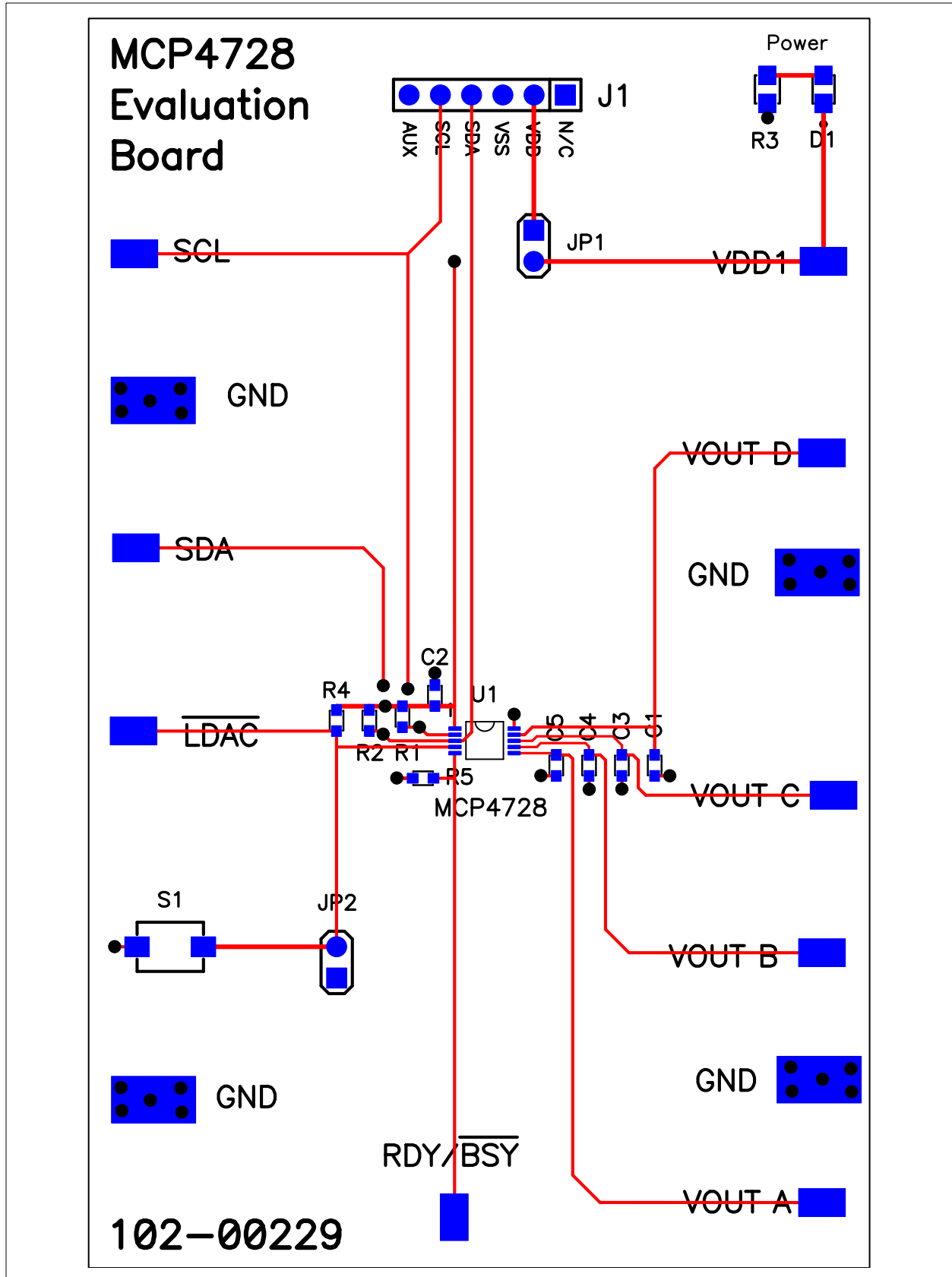
# MCP4728 Evaluation Board User's Guide

## A.2 BOARD – SCHEMATIC



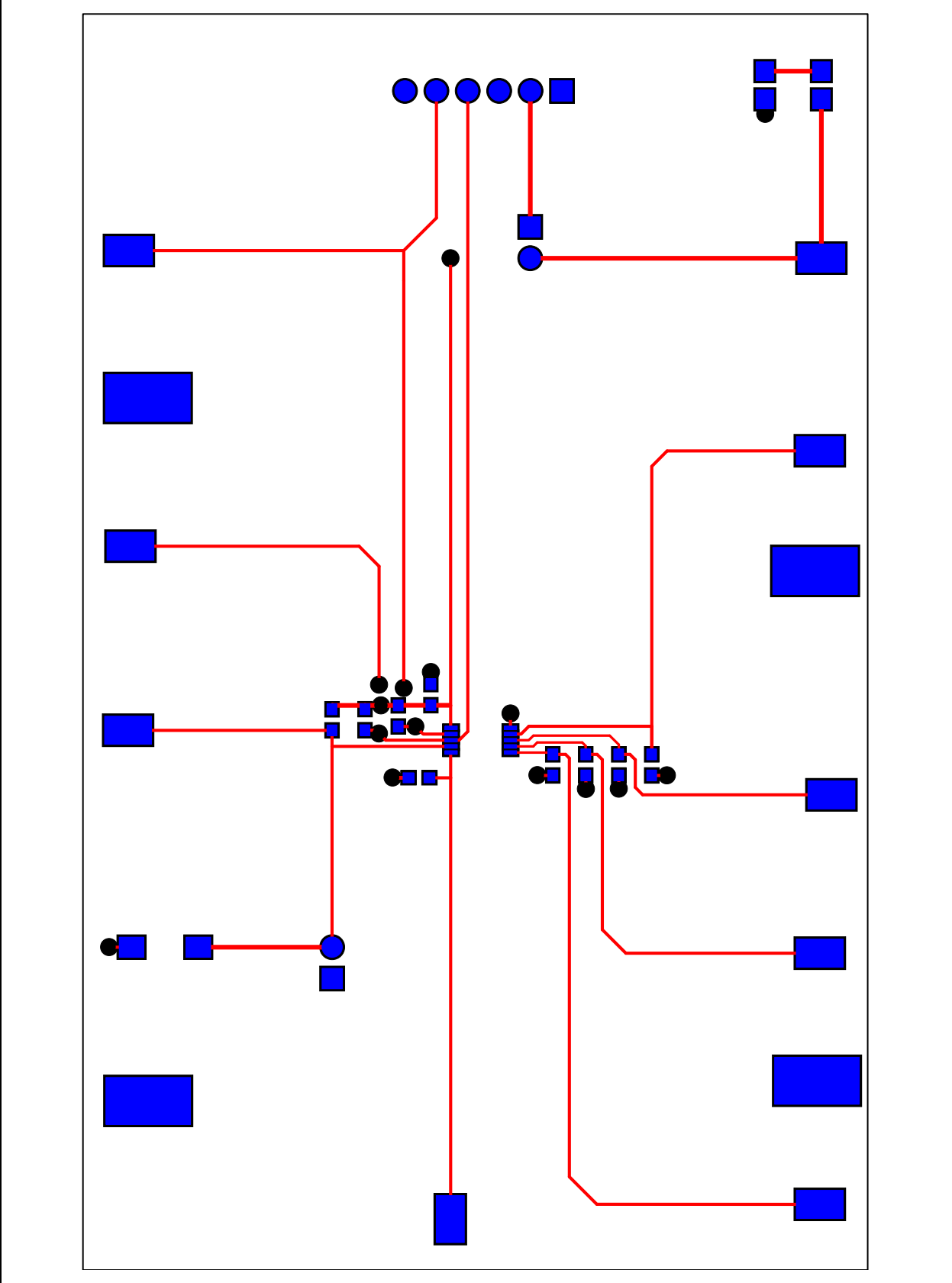


## A.3 BOARD – TOP SILK, TOP PADS AND TOP COPPER

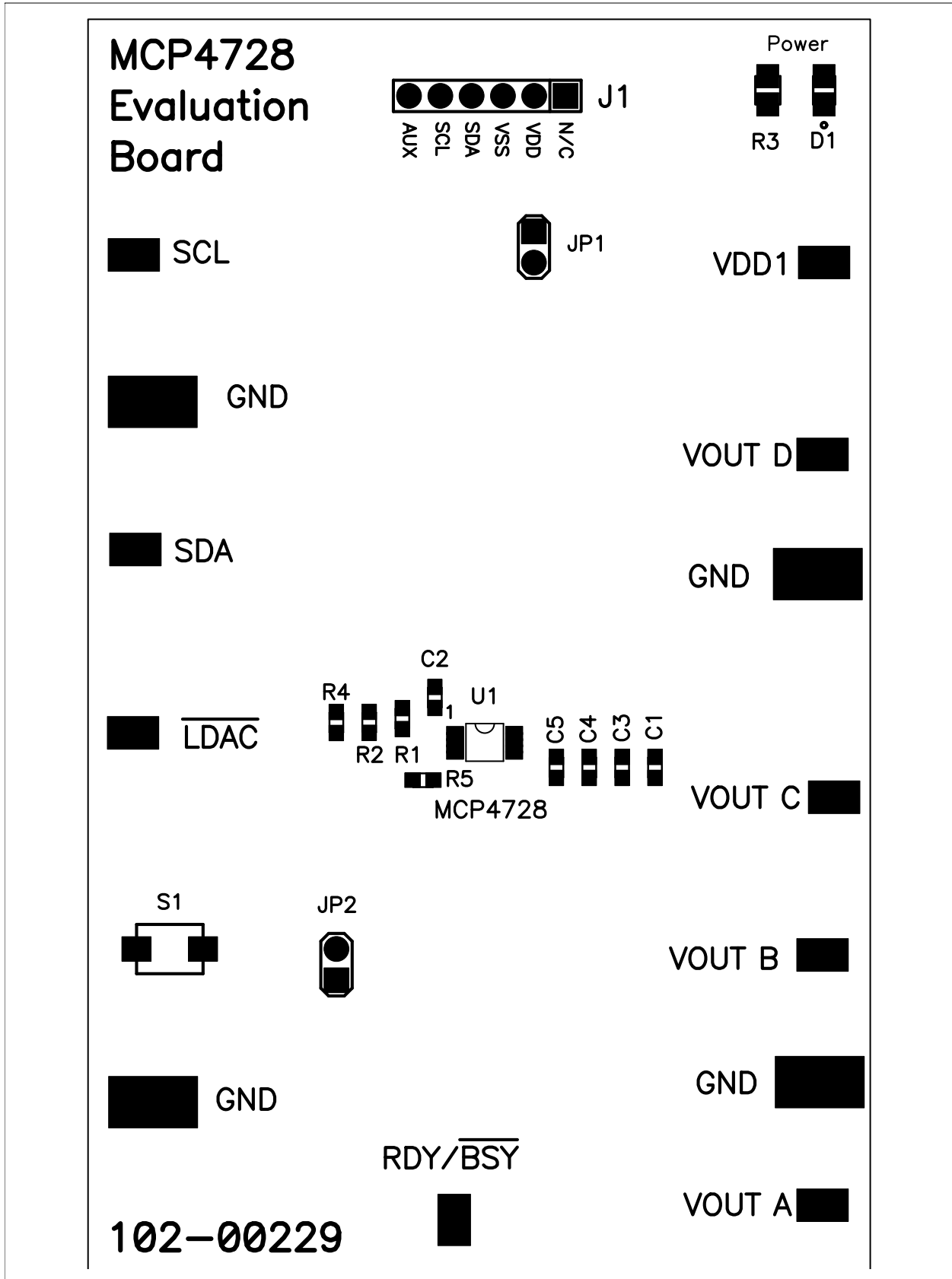


# MCP4728 Evaluation Board User's Guide

## A.4 BOARD – TOP COPPER AND PADS

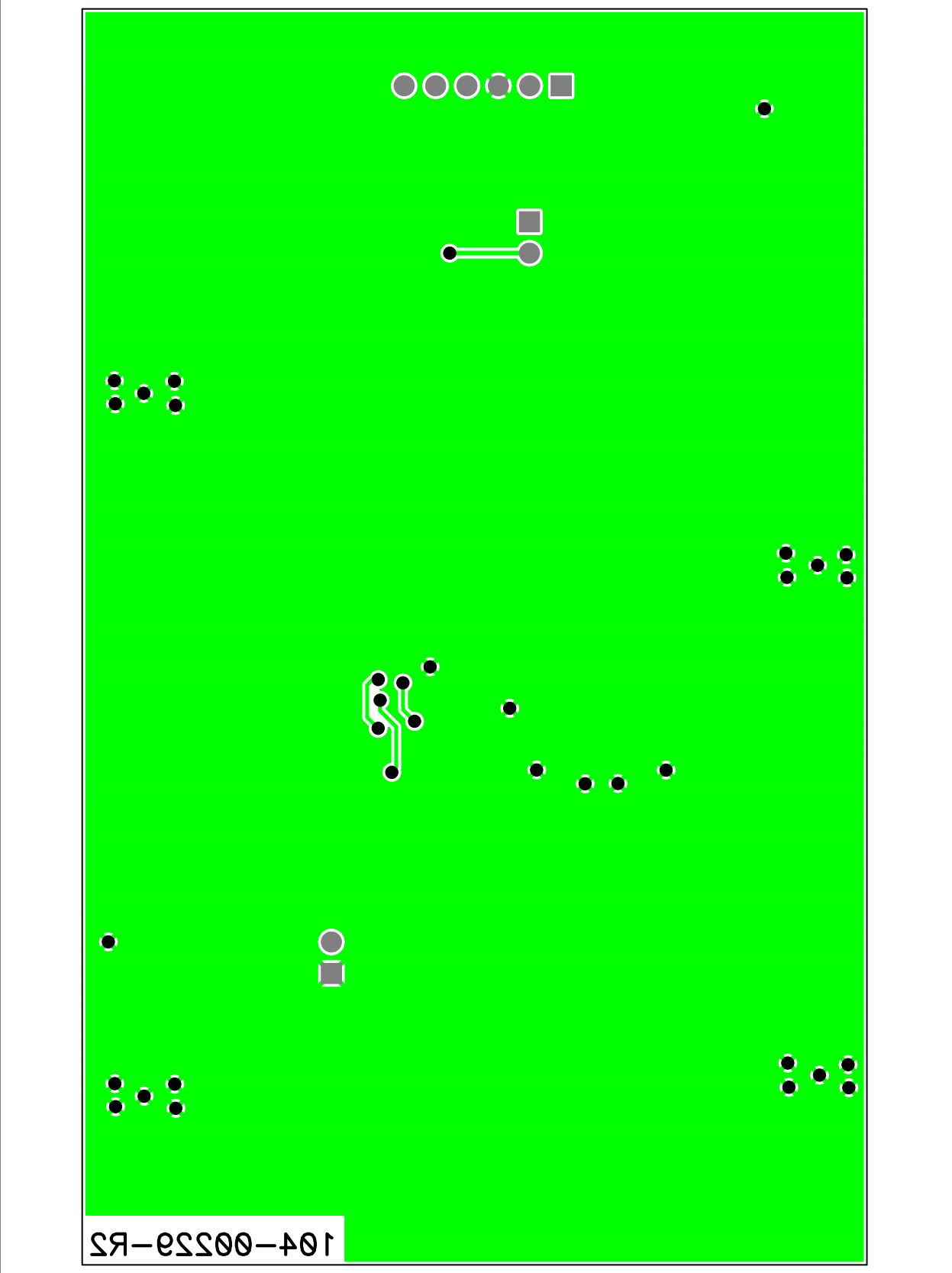


## A.5 BOARD – TOP PADS AND SILK



# MCP4728 Evaluation Board User's Guide

## A.6 BOARD – BOTTOM COPPER LAYER



**Appendix B. Bill Of Materials (BOM)**

**TABLE B-1: BILL OF MATERIALS**

Qty	Reference	Description	Manufacturer	Part Number
4	C1, C3, C4, C5	CAP 1000PF 50V CERAMIC X7R 0603	Panasonic® - ECG	ECJ-1VB1H102K
1	C2	CAP CERAMIC 10UF 6.3V X5R 0603	Panasonic - ECG	ECJ-1VB0J106M
1	D1	LED RED CLEAR 0805 SMD	Lite-On Inc	LTST-C170CKT
1	J1	CONN HEADER 6POS .100 R/A TIN	Molex®/Waldom® Electronics Corp	22-05-2061
2	JP1, JP2	CONN HEADER 2POS .100 VERT TIN	Molex/Waldom Electronics Corp	22-03-2021
1	PCB	RoHS Compliant Bare PCB, MCP4728 Evaluation board	Microchip Technology Inc.	104-00229
4	R1, R2, R4, R5	RES 4.99K OHM 1/10W 1% 0603 SMD	Panasonic - ECG	ERJ-3EKF4991V
1	R3	RES 470 OHM 1/8W 5% 0805 SMD	Panasonic - ECG	ERJ-6GEYJ471V
13	RDY/~BSY, SCL, SDA, VDDA, VOUTA, VOUTB, VOUTC, VOUTD, LDAC, GND	TEST POINT PC COMPACT SMT	Keystone Electronics®	5016
1	S1	SWITCH LIGHT TOUCH 160GF SMD	Panasonic - ECG	EVQ-PPBA25
1	U1		Microchip Technology Inc.	MCP4728-E/UN

**Note 1:** The components listed in this Bill of Materials are representative of the PCB assembly. The released BOM used in manufacturing uses all RoHS-compliant components.

# MCP4728 Evaluation Board User's Guide

---

NOTES:

**Appendix C. MCP4728 Read/Write Commands**

**C.1 INTRODUCTION**

Table summarizes the write command types and their functions. The write command is defined by using three write command type bits (C2, C1, C0) and two write function bits (W1, W0). Writing and reading the I<sup>2</sup>C address bits are not demonstrated with the PICKit Serial Analyzer. Please see the MCP4728 data sheet for more details on the commands.

**TABLE C-1: WRITE COMMAND TYPES**

Command Field			Write Function		Command Name	Function
C2	C1	C0	W1	W0		
<b>Fast Mode Write</b>						
0	0	X	Not Used		Fast Write for DAC Input Registers	This command writes to the DAC input registers sequentially with limited configuration bits. The data is sent sequentially from channels A to D. The input register is written at the acknowledge clock pulse of the channel's last input data byte. EEPROM is not affected. <b>(Note 1)</b>
<b>Write DAC Input Register and EEPROM</b>						
0	1	0	0	0	Multi-Write for DAC Input Registers	This command writes to multiple DAC input registers, one DAC input register at a time. The writing channel register is defined by the DAC selection bits (DAC1, DAC0). EEPROM is not affected. <b>(Note 2)</b>
			1	0	Sequential Write for DAC Input Registers and EEPROM	This command writes to both the DAC input registers and EEPROM sequentially. The sequential writing is carried out from a starting channel to channel D. The starting channel is defined by the DAC selection bits (DAC1 and DAC0). The input register is written at the acknowledge clock pulse of the last input data byte of each register. However, the EEPROM data is written altogether at the same time sequentially at the end of the last byte. <b>(Note 2),(Note 3)</b>
			1	1	Single Write for DAC Input Register and EEPROM	This command writes to a single selected DAC input register and its EEPROM. Both the input register and EEPROM are written at the acknowledge clock pulse of the last input data byte. The writing channel is defined by the DAC selection bits (DAC1 and DAC0). <b>(Note 2),(Note 3)</b>
<b>Write I<sup>2</sup>C Address Bits (A2, A1, A0)</b>						
0	1	1	Not Used		Write I <sup>2</sup> C Address Bits	This command writes new I <sup>2</sup> C address bits (A2, A1, A0) to the DAC input register and EEPROM.

- Note 1:** The analog output is updated when LDAC pin is (or changes to) "Low". UDAC bit is not used for this command.
- 2:** The DAC output is updated when LDAC pin or UDAC bit is "Low".
- 3:** The device starts writing to the EEPROM on the acknowledge clock pulse of the last channel. The device does not execute any command until RDY/BSY bit comes back to "High".
- 4:** The input and output registers are updated at the acknowledge clock pulse of the last byte. The update does not require LDAC pin or UDAC bit conditions. EEPROM is not affected.

# MCP4728 Evaluation Board User's Guide

TABLE C-1: WRITE COMMAND TYPES (CONTINUED)

Command Field			Write Function		Command Name	Function
C2	C1	C0	W1	W0		
<b>Write <math>V_{REF}</math>, Gain, and Power-Down Select Bits (Note 4)</b>						
1	0	0	Not Used	Write Reference ( $V_{REF}$ ) selection bits to Input Registers	This command writes reference ( $V_{REF}$ ) selection bits of each channel.	
1	1	0	Not Used	Write Gain selection bit to Input Registers	This command writes Gain selection bits of each channel.	
1	0	1	Not Used	Write Power-Down bits to Input Registers	This command writes Power-Down bits of each channel.	

- Note 1:** The analog output is updated when  $\overline{LDAC}$  pin is (or changes to) "Low".  $\overline{UDAC}$  bit is not used for this command.
- 2:** The DAC output is updated when  $\overline{LDAC}$  pin or  $\overline{UDAC}$  bit is "Low".
- 3:** The device starts writing to the EEPROM on the acknowledge clock pulse of the last channel. The device does not execute any command until  $RDY/\overline{BSY}$  bit comes back to "High".
- 4:** The input and output registers are updated at the acknowledge clock pulse of the last byte. The update does not require  $\overline{LDAC}$  pin or  $\overline{UDAC}$  bit conditions. EEPROM is not affected.



# MCP4728 Read/Write Commands

---

NOTES:



---

---

## WORLDWIDE SALES AND SERVICE

---

---

### AMERICAS

**Corporate Office**  
2355 West Chandler Blvd.  
Chandler, AZ 85224-6199  
Tel: 480-792-7200  
Fax: 480-792-7277  
Technical Support:  
<http://support.microchip.com>  
Web Address:  
[www.microchip.com](http://www.microchip.com)

**Atlanta**  
Duluth, GA  
Tel: 678-957-9614  
Fax: 678-957-1455

**Boston**  
Westborough, MA  
Tel: 774-760-0087  
Fax: 774-760-0088

**Chicago**  
Itasca, IL  
Tel: 630-285-0071  
Fax: 630-285-0075

**Cleveland**  
Independence, OH  
Tel: 216-447-0464  
Fax: 216-447-0643

**Dallas**  
Addison, TX  
Tel: 972-818-7423  
Fax: 972-818-2924

**Detroit**  
Farmington Hills, MI  
Tel: 248-538-2250  
Fax: 248-538-2260

**Kokomo**  
Kokomo, IN  
Tel: 765-864-8360  
Fax: 765-864-8387

**Los Angeles**  
Mission Viejo, CA  
Tel: 949-462-9523  
Fax: 949-462-9608

**Santa Clara**  
Santa Clara, CA  
Tel: 408-961-6444  
Fax: 408-961-6445

**Toronto**  
Mississauga, Ontario,  
Canada  
Tel: 905-673-0699  
Fax: 905-673-6509

### ASIA/PACIFIC

**Asia Pacific Office**  
Suites 3707-14, 37th Floor  
Tower 6, The Gateway  
Harbour City, Kowloon  
Hong Kong  
Tel: 852-2401-1200  
Fax: 852-2401-3431

**Australia - Sydney**  
Tel: 61-2-9868-6733  
Fax: 61-2-9868-6755

**China - Beijing**  
Tel: 86-10-8528-2100  
Fax: 86-10-8528-2104

**China - Chengdu**  
Tel: 86-28-8665-5511  
Fax: 86-28-8665-7889

**China - Hong Kong SAR**  
Tel: 852-2401-1200  
Fax: 852-2401-3431

**China - Nanjing**  
Tel: 86-25-8473-2460  
Fax: 86-25-8473-2470

**China - Qingdao**  
Tel: 86-532-8502-7355  
Fax: 86-532-8502-7205

**China - Shanghai**  
Tel: 86-21-5407-5533  
Fax: 86-21-5407-5066

**China - Shenyang**  
Tel: 86-24-2334-2829  
Fax: 86-24-2334-2393

**China - Shenzhen**  
Tel: 86-755-8203-2660  
Fax: 86-755-8203-1760

**China - Wuhan**  
Tel: 86-27-5980-5300  
Fax: 86-27-5980-5118

**China - Xiamen**  
Tel: 86-592-2388138  
Fax: 86-592-2388130

**China - Xian**  
Tel: 86-29-8833-7252  
Fax: 86-29-8833-7256

**China - Zhuhai**  
Tel: 86-756-3210040  
Fax: 86-756-3210049

### ASIA/PACIFIC

**India - Bangalore**  
Tel: 91-80-3090-4444  
Fax: 91-80-3090-4080

**India - New Delhi**  
Tel: 91-11-4160-8631  
Fax: 91-11-4160-8632

**India - Pune**  
Tel: 91-20-2566-1512  
Fax: 91-20-2566-1513

**Japan - Yokohama**  
Tel: 81-45-471- 6166  
Fax: 81-45-471-6122

**Korea - Daegu**  
Tel: 82-53-744-4301  
Fax: 82-53-744-4302

**Korea - Seoul**  
Tel: 82-2-554-7200  
Fax: 82-2-558-5932 or  
82-2-558-5934

**Malaysia - Kuala Lumpur**  
Tel: 60-3-6201-9857  
Fax: 60-3-6201-9859

**Malaysia - Penang**  
Tel: 60-4-227-8870  
Fax: 60-4-227-4068

**Philippines - Manila**  
Tel: 63-2-634-9065  
Fax: 63-2-634-9069

**Singapore**  
Tel: 65-6334-8870  
Fax: 65-6334-8850

**Taiwan - Hsin Chu**  
Tel: 886-3-6578-300  
Fax: 886-3-6578-370

**Taiwan - Kaohsiung**  
Tel: 886-7-536-4818  
Fax: 886-7-536-4803

**Taiwan - Taipei**  
Tel: 886-2-2500-6610  
Fax: 886-2-2508-0102

**Thailand - Bangkok**  
Tel: 66-2-694-1351  
Fax: 66-2-694-1350

### EUROPE

**Austria - Wels**  
Tel: 43-7242-2244-39  
Fax: 43-7242-2244-393

**Denmark - Copenhagen**  
Tel: 45-4450-2828  
Fax: 45-4485-2829

**France - Paris**  
Tel: 33-1-69-53-63-20  
Fax: 33-1-69-30-90-79

**Germany - Munich**  
Tel: 49-89-627-144-0  
Fax: 49-89-627-144-44

**Italy - Milan**  
Tel: 39-0331-742611  
Fax: 39-0331-466781

**Netherlands - Drunen**  
Tel: 31-416-690399  
Fax: 31-416-690340

**Spain - Madrid**  
Tel: 34-91-708-08-90  
Fax: 34-91-708-08-91

**UK - Wokingham**  
Tel: 44-118-921-5869  
Fax: 44-118-921-5820

03/26/09