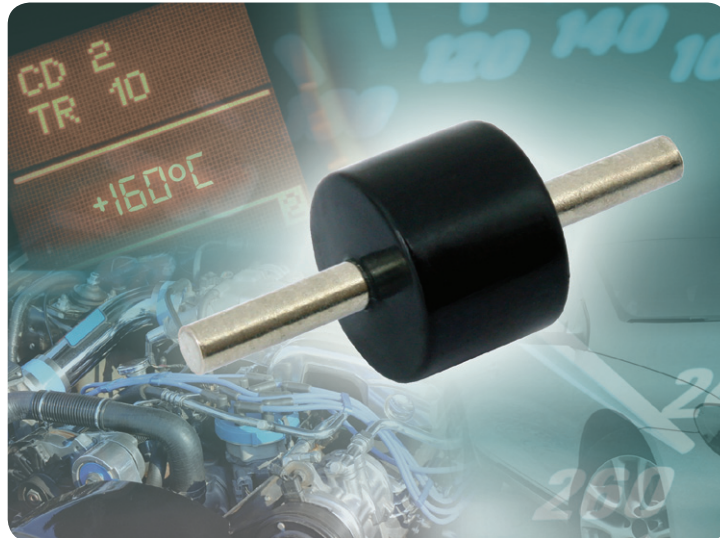


# HIGH-CURRENT THERMAL FUSE

## HCTF Series



### High-Current Thermal Fuse



#### KEY BENEFITS

- Functioning temperature:  $\vartheta_F = (235 \pm 15) \text{ }^\circ\text{C}$
- Holding temperature:  $\vartheta_H = 160 \text{ }^\circ\text{C}$
- Current:  $\leq 55 \text{ A}$
- Safety interrupt of electrical power

#### APPLICATIONS

- Fan cooling units
- Liquid cooling pump control units
- Inlet air control units
- Diesel pre-heater
- Engine control units
- ABS control units
- Heater plug

#### END PRODUCTS

- Cars and trucks

#### RESOURCES

- Datasheet: HCTF 235 - <http://www.vishay.com/doc?28798>
- For technical questions contact [fuse@vishay.com](mailto:fuse@vishay.com)
- Material categorization: For definitions of compliance please see <http://www.vishay.com/doc?99912>



# HIGH-CURRENT THERMAL FUSE

## HCTF Series



### High-Current Thermal Fuse

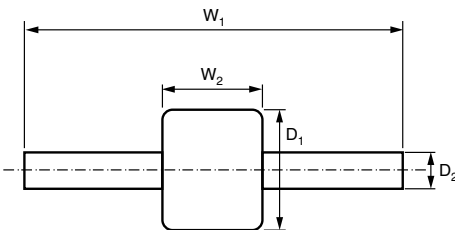


The HCTF series is especially designed for high current applications with an operation temperature up to 160 °C. In case of excess heat in the range of the functioning temperature of  $(235 \pm 15) \text{ }^\circ\text{C}$  the thermo fuse opens automatically and disconnects the circuit. Typical applications are automotive power electronics that are connected to steady battery power (B+ or terminal number 30).

TECHNICAL SPECIFICATIONS	
<b>DESCRIPTION</b>	<b>HCTF 235</b>
Functioning temperature $\vartheta_F$	$(235 \pm 15) \text{ }^\circ\text{C}$
Holding temperature $\vartheta_H$ (1000 h)	160 °C
Voltage $U$ DC	24 V
Current / DC <sup>(1)</sup>	$\leq 55 \text{ A}$
Cold resistance $R_{\text{cold}}$	$\leq 0.1 \text{ m}\Omega$
Residual resistance $R_g$ after breaking	$> 1 \text{ M}\Omega$

**Note**

<sup>(1)</sup> Current rating depends on external thermal management.


**DIMENSIONS** - Mass and relevant physical dimensions

TYPE	$W_1$ (mm)	$W_2$ (mm)	$D_1$ (mm)	$D_2$ (mm)	MASS (g)
HCTF	$19.8 \pm 0.5$	$6.5 \pm 0.5$	$8.0 \pm 0.5$	$1.8 \pm 0.2$	$1.3 \pm 0.3$

**PART NUMBER AND PRODUCT DESCRIPTION <sup>(1)</sup>**
**PART NUMBER: HCTF235L055000BR00**

H	C	T	F	2	3	5	L	0	5	5	0	0	0	B	R	0	0
TYPE/ FUNCTIONING TEMPERATURE		TOLERANCE		SPECIAL		CURRENT		PACKAGING		SPECIAL							
HCTF235		L = $\pm 15 \text{ }^\circ\text{C}$		0 = Standard		Current in mA. 55000 = 55 A		BR		Up to 2 digits 00 = Standard							

**PRODUCT DESCRIPTION: HCTF 235 15 °C BR 55A0**

HCTF	235	15 °C	BR	55A0
TYPE	FUNCTIONING TEMPERATURE	TOLERANCE	PACKAGING	CURRENT
HCTF	235	$\pm 15 \text{ }^\circ\text{C}$	BR	55A0 = 55 A

**Note**

<sup>(1)</sup> Products can be ordered using either the PART NUMBER or the PRODUCT DESCRIPTION

Fuses - High Current Range Up to 55 A

Revision 25-May-12